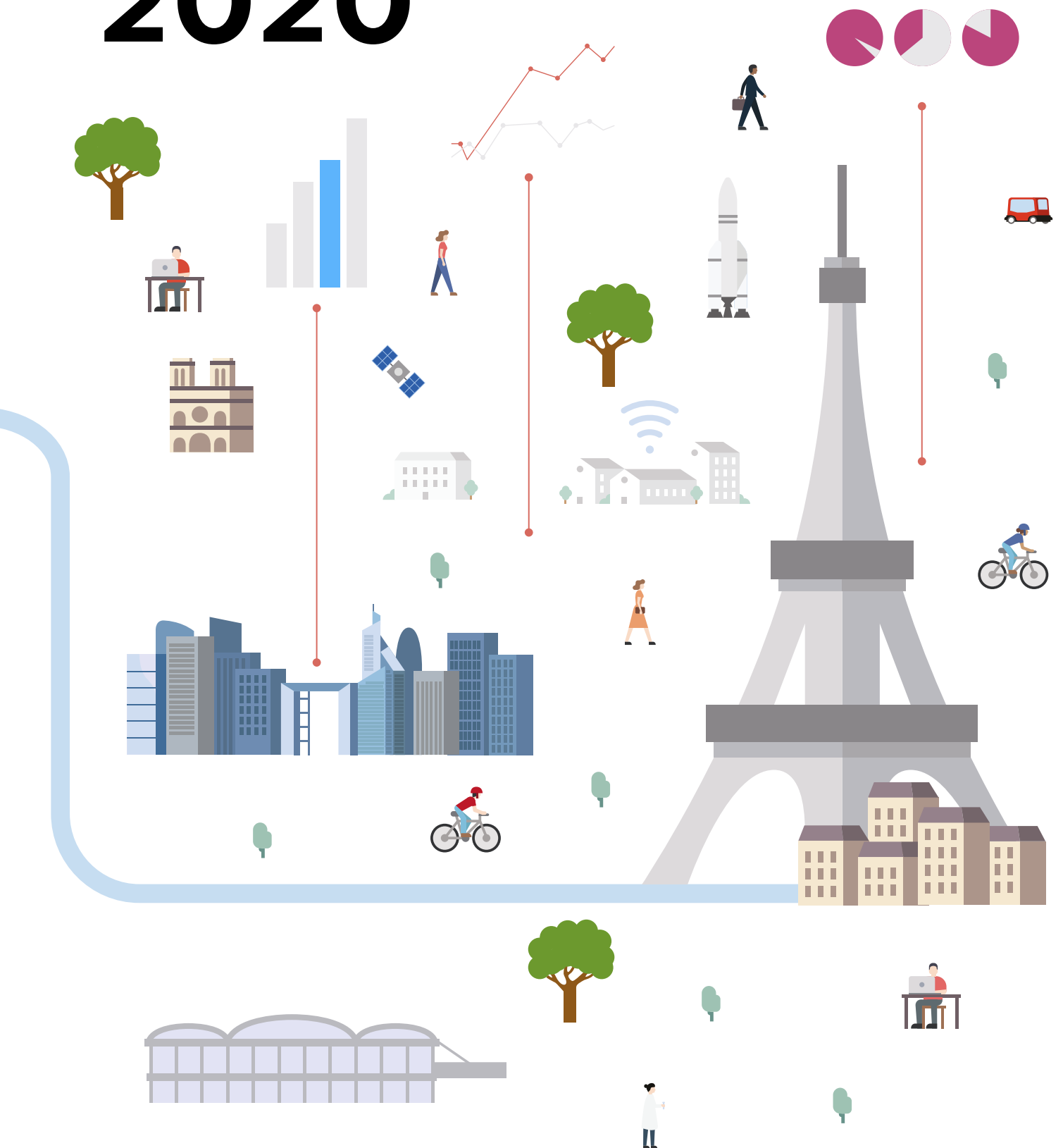
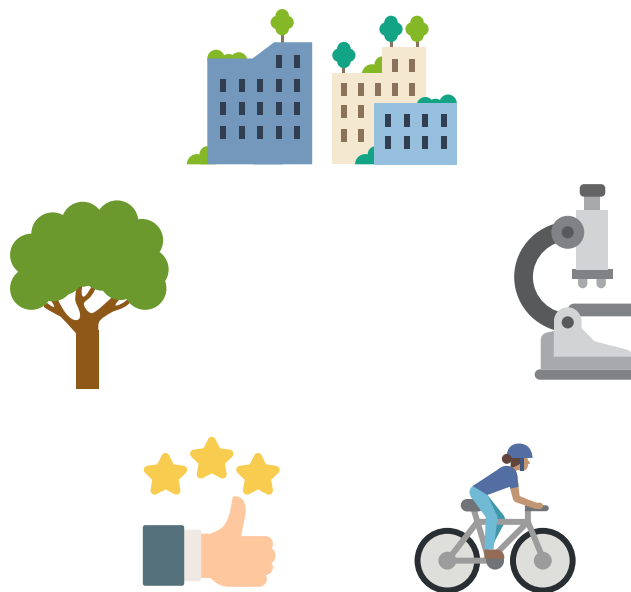


# Paris Region Facts & Figures 2020





# Welcome to Paris Region



## Europe's business & innovation powerhouse

Paris Region Facts and Figures 2020 lays out a panorama of the region's economic dynamism and social life, positioning it among the leading regions in Europe and worldwide.

With its fundamental key indicators, the brochure "Paris Region Facts and Figures 2020" is a tool for decision and action for companies and economic stakeholders.

It is useful to economic and political leaders of the region and to all those who want to have a global vision of this dynamic regional economy.

Paris Region Facts and Figures 2020 is a collaborative publication produced by Choose Paris Region, L'Institut Paris Region and the Paris Île-de-France Regional Chamber of Commerce and Industry.



Jardin\_des\_tuileries\_Tour\_Eiffel\_01\_tvb CRT IDF-Van Biesen

# Table of contents

5	<b>Welcome to Paris Region</b>	●
6	<b>Overview</b>	●
10	<b>Population</b>	●
12	<b>Economy and Business</b>	●
18	<b>Employment</b>	●
20	<b>Education</b>	●
24	<b>R&amp;D and Innovation</b>	●

27	<b>Digital Infrastructure</b>	●
28	<b>Real Estate</b>	●
30	<b>Transport and Mobility</b>	●
32	<b>Logistics</b>	●
34	<b>Meetings and Exhibitions</b>	●
36	<b>Tourism and Quality of life</b>	●

# Paris Region, a dynamic and fast-growing global region

Standing at the crossroads of European and worldwide trade, the Paris Region is Europe's #1 economic vibrant, innovative and sustainable.

## Highly-diversified sectors of excellence

Paris Region is renowned for its highly diversified economic landscape and sectors of excellence, including biotechnology, nanotechnology, telecommunications, 3D animation, the aerospace and automotive industries...

The Paris Region's diversified economy is buzzing with top-ranked high-tech clusters and research centers.

This unique landscape generates exciting opportunities for cross-sector collaborations.

## A massive consumer marketplace

Access to **513 million** European consumers  
**12.2 million** inhabitants,  
**50.1 million** tourists,  
**9.4 million** visitors in the Region's main conference and exhibition centers.

## A dynamic and fast-growing region

The Paris Region is a truly global region which accounts for **23.3%** of France's workforce, **31%** of national GDP and **40.5%** of the country's researchers. **53%** of residents are under the age of 40. This young and steadily growing population is not only attracted by the region's economic opportunities but also by the quality of life offered.

## A business and innovation powerhouse

The highest GDP in the European Union (EU28) in billions of euros. A vibrant exchange between Europe's highest concentration of Fortune 500 corporations, corporate headquarters, SMEs, trailblazing startups, world-class competitiveness clusters. **#1** worldwide destination for international meetings. The leader in Europe for R&D talent and spending.

## A qualified, cosmopolitan talent pool

Large, well-educated, international workforce: **6.4 million** jobs, **36%** of all French executives. Europe's largest concentration of higher education students: **704,500** students (**26.3%** of students in France), World-class engineers, researchers, Fields Medals, Abel and Nobel prizes,... Internationally recognized technical and scientific skills (top business, engineering and specialized higher education institutions, engineers, researchers...).

## Europe's largest scope of real estate solutions

Attractive, diversified and very competitive real estate, with new office districts and business parks, as well as the opening of coworking spaces, "startup factories"...

## World-class infrastructure

**3** international airports, high-speed rail, an ever-expanding urban subway system thanks to the Grand Paris Express project, the largest urban renewal project in Europe, new modes of mobility and an excellent broadband communication network.

## An outstanding lifestyle

There's a reason why the Paris Region is the **#1** destination on the planet: with **50.1 million** visitors each year, the area is synonymous with "art de vivre", culture, gastronomy and history. The Region is also committed to improving the environment, preserving biodiversity and reducing carbon emissions.

## Urban development & big events

### The Grand Paris Express

With its **200 km** of new tracks and **68** new transit stations, the network of the regional super-subway, the Grand Paris Express project, will be doubling its size by 2030, changing the face of the Region.

### Paris 2024

Paris will also be hosting the 2024 Olympic and Paralympic Games, which will generate major infrastructure and construction projects.

# A world leading economic and innovative region

With a GDP of €709 billion and a population of 12.2 million, the Paris Region represents 31% of France's GDP and 18.4% of its population, while it respectively represents 4.6% and 2.4% of the European Union's GDP and population.

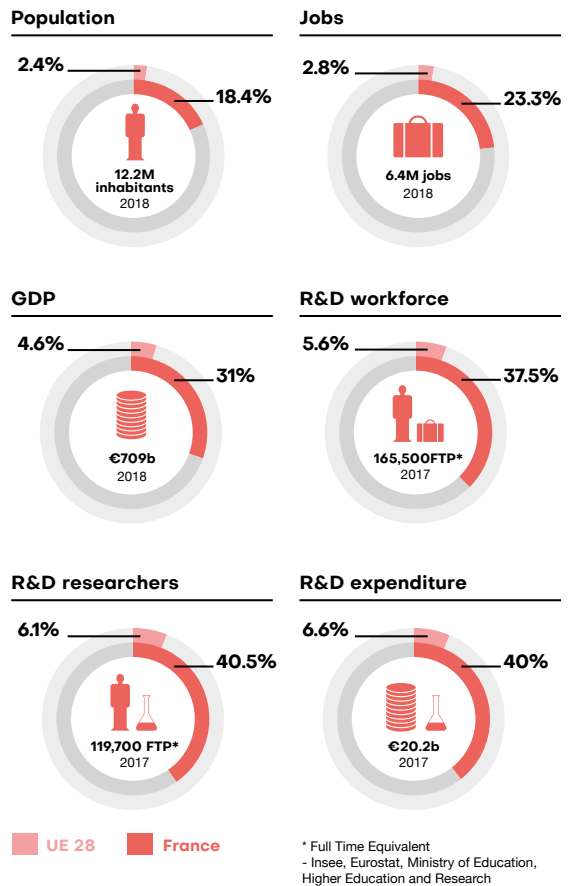
Paris Region in the European Union  
as of 01.03.2020



UK has left the EU28 from 1.31.2019

- Paris Region is part of:**
- The European Union
  - The Schengen area
  - The Eurozone

## Paris Region vs. France & Europe



## An international region

**1.7 million** foreigners live in the region  
**13.9%** of the population  
2016

**119,400** foreign students in higher education, including **80,500** in Paris Region's public universities  
2018-19

**8,240** foreign PhD students  
2018-19

**5,800** foreign researchers  
2018

**22.2 million** foreign visitors  
2018

**15,100** foreign sites  
**620,000** jobs,  
**1 out of 6 jobs** in Paris Region is in a foreign company (16.7%)  
2017, data 2013

**409** foreign companies  
**6,303** jobs created  
2018

# Paris Region in numbers



**704,500**  
students



**12,012 km<sup>2</sup>**  
surface area



**12.2 million**  
inhabitants  
**1,017**  
inhabitants  
per km<sup>2</sup>



**6.4 million jobs**  
(salaried and  
non-salaried)



**108 million**  
passengers  
in Air Traffic



**165,500**  
R&D jobs incl.

**119,700**  
researchers

**€20.2b**  
R&D expenditure



**1,166,000**  
companies  
**1,285,000**  
sites (all  
activities)  
**244,000**  
companies  
created  
**8,000**  
startups



**GDP €709b**  
**GDP €58,300**  
per capita  
**GDP €110,549**  
per job



**54.2 million m<sup>2</sup>**  
Office space



**€148.5b**  
Import



**€97.5b**  
Export



**19 million**  
passengers

**7**  
high-speed  
train stations



**50.1 million**  
tourists,  
incl.  
**22.2 million**  
foreign tourists



# Paris Region's position in international rankings

The Paris Region is a globally competitive region. It is one of the most attractive regions in the world according to different rankings on attractiveness, companies, foreign direct investments, talents, real estate, cost and quality of life... Recent international benchmarking studies have put the region within the top metropolises in the world in terms of Human Capital, Economic activity, Attractiveness, Cultural experience, Information exchange, Research and Development, Tourism...



Hoops Factory, Basket Hall in aubervilliers © J.-M. Sicot, L'Institut Paris Region

## Global Attractiveness

### Global Cities Index 2019 on economic performances

- #1 New York
- #2 London
- #3 Paris
- #4 Tokyo
- #5 Hong-Kong

A.T. Kearney

### Global Cities Outlook 2019 on the potential of a city to attract and retain global capital, people, and ideas in coming years

- #1 London
- #2 Singapore
- #3 San Francisco
- #4 Amsterdam
- #5 Paris

A.T. Kearney

### Dynamic Cities 2019 Savills

#### 2019 Top five dynamic cities

- #1 London
- #2 Paris
- #3 Cambridge
- #4 Berlin
- #5 Amsterdam

Savills

## Foreign direct investments

As of 2018, the Paris Region is the second international destination for international investments following London, and first for Research, Design and Engineering investments, followed by Singapore.

### fDi European Regions of the Future 2020/21



fDi Intelligence

### Global Cities Investment monitor 2019

International investors' perceptions of future attractiveness.

- #1 New York
- #2 London
- #3 Paris

Paris Region, #1 world destination for investments in R&D  
2<sup>nd</sup> most attractive location to set up a business

KPMG – Paris Ile-de-France Capitale Economique, Choose Paris Region

## Cost & Quality of Life

### Cost of living Survey 2019

Paris is less expensive in Europe than Zurich, Bern, Geneva, Copenhagen, London, Moscow, Dublin, Milan.

Mercer 2019

### Quality of living Survey 2019

The quality of life in Paris is very appreciated, and ranked ahead of that of many global cities such as London, Luxembourg, Madrid, Rome...

Mercer 2019

### Cost of living Expatistan

Paris is cheaper than London  
12% cheaper for housing  
43% cheaper for transportation  
60% cheaper for personal care  
10% for entertainment

Expatistan 1/20



## Real Estate

### Emerging Trends in Real Estate, Europe 2020

Paris is ranked **#1** for its overall real estate prospects in 2020.

The Grand Paris project, Europe's largest transport scheme, is widely lauded as a game-changer for the French capital, setting it apart from the competition.

Emerging Trends in Real Estate, Europe		
	2020	2019
1	Paris	Lisbon
2	Berlin	Berlin
3	Frankfurt	Dublin
4	London	Madrid
5	Madrid	Frankfurt

PWC. ULI Urban Life Institute

### Global Property Handbook 2020

Paris became the preferred city for international clients to invest in real estate

- #1 Paris
- #2 New York
- #3 Tokyo
- #4 Los Angeles
- #5 Hong Kong

Barnes

## Talents

### Cities of Influence, Where to find the best talent 2018

- #1 London
  - #2 Paris
  - #3 Madrid
- Colliers International, 2018

### Financial Times Education rankings 2019-20

- HEC Paris #1 Best executive MBA program
  - Best European business school
- Financial Times, 2019

## Tourism and meetings

### 2019 Mastercard's Global Destination Cities Index

Total of international overnight visitors by city

- #1 Bangkok 22.78 M
  - #2 Paris 19.10 M
  - #3 London 19.09 M
  - #4 Dubai 15.93 M
  - #5 Singapore 14.67 M
- Mastercard

### 2019 ICCA meetings organized in the world

- Paris, #1 world destination for congresses
  - #2 Vienna
  - #3 Barcelona
  - #4 Berlin
  - #5 Madrid
- ICCA, International Congress and Convention Association

## R&D, Tech and Innovation

### Global Innovation Index 2019

Paris, European **#1** and **#9** largest science and technology clusters in the world

OMPI, 2019

### Startup Genome 2019

Paris Region innovation: **9<sup>th</sup>** on the top 15 startup ecosystems in the world

Startup Genome, 7/19

### Innovation Cities Top 100 Index 2019

Paris, **#2** European and **#6** best city in the world for innovation

2thinknow



La Défense Business district © 11h45 pour Defacto

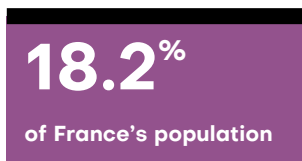
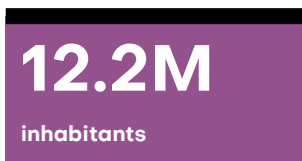
# A young, cosmopolitan and talented population

The Paris Region is the most populated region in France and in Europe and one of the most populated regions in the world. The people living in the Region are largely diverse and more foreigners live in the region than they do in the rest of France. The Paris Region's population remains one of the most fertile regions of metropolitan France and also the youngest.



© Ecole Polytechnique Paris/Saclay, J. Barande

## Europe's most populous region



2.4% of the European Union's population

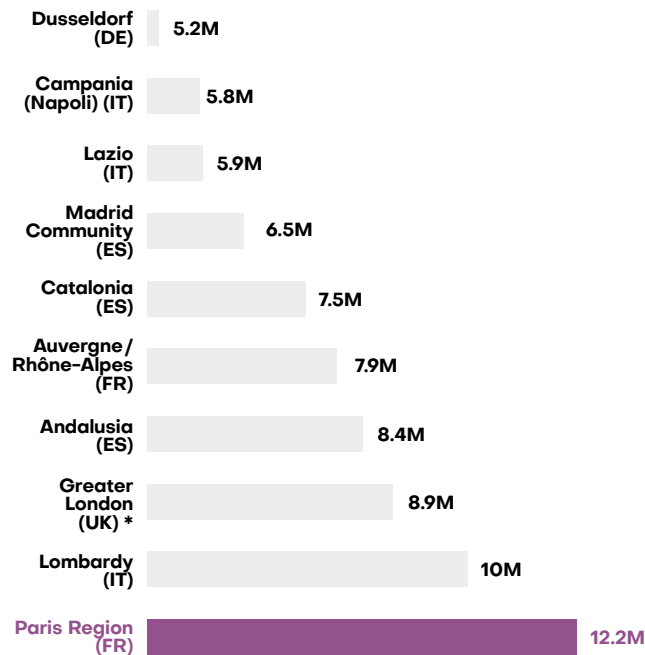
Europe's most populous region ahead of Lombardy, Greater London, Andalusia, Catalonia and Auvergne-Rhône-Alpes.

Over 100,000 inhabitants in 5 towns in Paris Region:

Paris  
Boulogne-Billancourt  
Saint-Denis  
Argenteuil  
Montreuil  
INSEE, Eurostat 1/20, data 2018



## Paris Region, EU28's most populous region 2018



\* Greater London= Inner and Outer London

Eurostat 2018 (data 2017), NUTS 2

### A young, dynamic population

Paris Region contributes to 24% of births and 83% of the natural surplus of metropolitan France, a weight never reached before. Between 2012 and 2017, the region earned an average of 55,000 inhabitants per year.

25% of Paris Region's population is under 19 53% under 40				
Age	Paris Region		France	
	Total	% Total / Paris Region	Total	% Total / France
0-19	3,140,965	25.6	16,084,743	24
20-39	3,409,765	27.8	15,759,165	23.5
40-59	3,210,447	26.1	17,369,555	26
60-74	1,658,207	13.5	11,476,704	17
Over 75	858,826	7	6,373,536	9.5
<b>Total</b>	<b>12,272,210</b>	<b>100%</b>	<b>67,063,703</b>	<b>100%</b>

Insee, 2020, data 1/1/20

**174,439 births**  
**75,571 deaths**  
(France: 85.4)

**14.2‰ birth rate**  
(France: 11.3‰)

**Women's life expectancy**  
**85.9 years**

**Men's life expectancy**  
**81.1 years**  
(France: 79.7)

**Paris fertility rate:**  
**1.96 children per woman**

- Brussels: 1.82**
- London: 1.71**
- Upper Bavaria: 1.54**
- Amsterdam: 1.52**
- Berlin: 1.48**
- Catalonia: 1.39**
- Lombardy: 1.39**

(INSEE 1/20, data 2018 and 2019, Eurostat 1/20, data 2017, panel of regions)

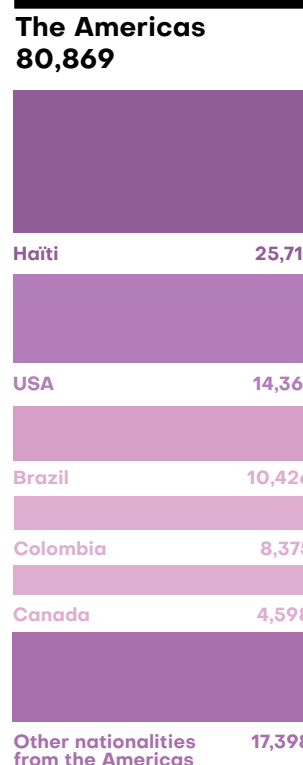
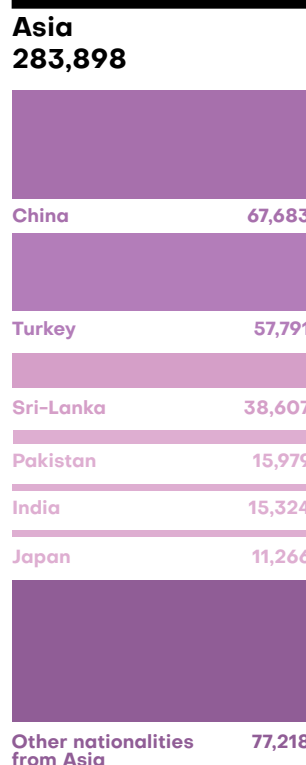
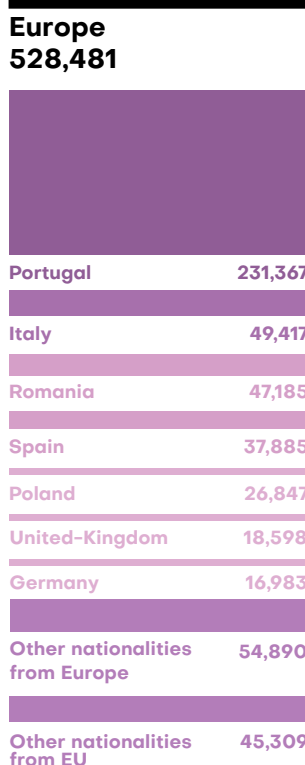
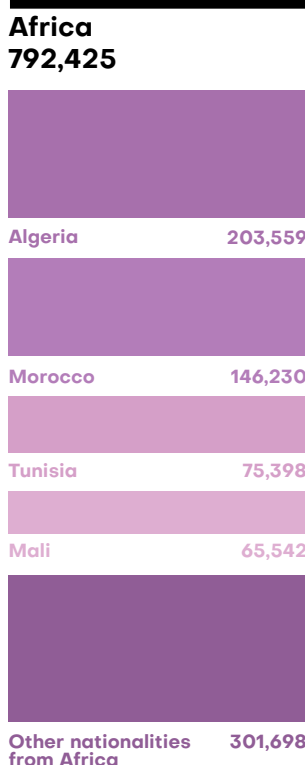
Top 5 of the EU28 regions counting young people between 25 and 29 years old	
Paris Region (FR)	888,930
Greater London (UK)	803,799
Lombardy (IT)	506,611
Andalusia (ES)	489,812
Catalonia (ES)	402,076

Eurostat 15/10/19, data 2018

### A cosmopolitan population

Paris Region is a place where people from all over the world live, study, work or visit.

- 46.96% come from Africa: 792,425**
- 31.32% come from Europe: 528,481**
- 16.82% come from Asia: 282,898**
- 4.79% come from the Americas: 80,869**
- 0.11% come from Oceania: 1,869**



INSEE, 6/19, data 2016



From the Arch of La Défense business district © Carlos Ayesta

# Europe's leading economic region

Paris Region is an economic powerhouse, with the EU's highest GDP, most Fortune 500 company headquarters in Europe, a buzzing startup scene and a thriving research community. The region's diverse economic landscape encompasses all sectors. Companies are choosing the Paris Region to grow their business.

## A dynamic and fast-growing region

The highest GDP in Europe, equivalent to that of the Netherlands, and higher than that of Sweden, Poland, Belgium or Norway.

Access to over **513 million** European consumers

Europe's highest concentration of Fortune 500 corporations

The Paris Region's economic dynamism benefits from its position at the heart of the world's economy.

The Paris Region is home to a truly diversified economy with industry leaders, innovative start-ups and all key stakeholders in between.

**€709b**  
GDP

**31%**  
of France's GDP

**4.6%**  
of EU28 GDP

**GDP per job €110,549**  
**GDP per capita €58,300**  
INSEE, Eurostat, 2020, data 2017

## Top 5 European Regions for GDP (million euros in 2017)



# A highly diversified economic landscape

## Key sectors

Paris Region is home to a truly diversified economy with industry leaders, innovative start-ups and all key stakeholders in between. It is renowned for its highly diversified economic landscape and sectors of excellence, including high-value-added service industries and high-tech manufacturing, ie. artificial intelligence, cleantech, deeptech, fintech, IT services, biotechnology, e-health, cultural industries, animation, as well as the aerospace and automotive industries, smart industry...



### Business Services

Accenture, Cap Gemini, EY, Gide Loyrette Nouel, KPMG...



### Aerospace & Defense

Airbus Group, Dassault Aviation, Safran, Thales Group, Ariespace, European Space Agency, Alcatel-Lucent, Zodiac...



### Automotive, Logistics and Mobility

Renault, PSA Peugeot Citroën, Bosch, Continental, Faurecia, Valeo, Air France-KLM Group, DHL, FedEx, Geodis, Paris Aéroport, RATP, SNCF, Systra, Transilien, Transdev...



### Fashion, Design, Luxury Goods

Cartier, Chanel, Hermes, Christian Louboutin, Kering (Gucci, Yves Saint-Laurent), LVMH (Louis Vuitton, Christian Dior, Guerlain...), L'Oréal...



### Cleantech, Energy, Smart City

Air Liquide, Areva, EDF, ENGIE, Schneider Electric, Suez, Total, Veolia... Bouygues, Eiffage, Vinci...



### Commerce / Retail

Amazon, Carrefour, Cora, FNAC, Galeries Lafayette, Groupe Casino, H&M, Ikea, Marionnaud, Metro, Printemps, Uniqlo, Zara...



### Creative industries, Film, TV

Europacorp, Gaumont, MK2, Netflix, Paramount, Pathé, Universal, Warner Bros, UGC... Buf compagnie, Gameloft, Mac Guff, Mikros Image, Mimesis Republic, Neko-Entertainment, Ubisoft...



### IT

Apple, Atos, Dassault Systèmes, Facebook, Free, Fujitsu, Google, Horiba, Huawei, IBM, Microsoft, Motorola, Nokia France, Oracle, Orange, Philips, Safran Electronics and Defense, SAP, SFR Group, Siemens, Sony, Thales, Vivendi, ZTE...



### Financial Services, Insurance

Bank of America, BNP Paribas, BPCE Group, CityBank, CM-CIC Group, Crédit Agricole, EBA European Bank Authority, Euronext Paris, JP Morgan, HSBC, La Banque Postale, Société Générale, Axa, Allianz, CNP Assurance, Generali...



### Food Industry

Danone, Finatis, Kraft Foods, Lactalis, Nestlé, Pernod Ricard...



### Healthcare & Life Sciences

AstraZeneca, Bristol-Myers Squibb, GlaxoSmithKline, Guerbet, Lilly, Pfizer, Roche, Sanofi-Aventis, Novartis...



### Tourism, Hotels, Catering

Accor, Club Med, Elior Groupe, Louvre Hotels, Lucien Barrière Group, Marriott, Pierre et Vacances & Center Parcs Group, Sodexo...



### M.I.C.E.\*

Comexposium, Reed Midem, Viparis... Disneyland® Paris...

\*Meetings, Incentives, Conventions, Exhibitions

## A business powerhouse

The primary strength of the Paris Region's economy is the concentration of jobs, corporate headquarters, SMEs/SMLs and business start-ups. All of France's very large businesses (> 1,500 employees each) have a site in the region.

**1,166,577**

companies

INSEE, 2018, Commercial activities, excluding agriculture

**244,147**

companies created

INSEE, 2019

**1,395,594**

sites

INSEE, 2020, data 31.12.15

**>8,000**

startups

Dealroom/French Tech 2020

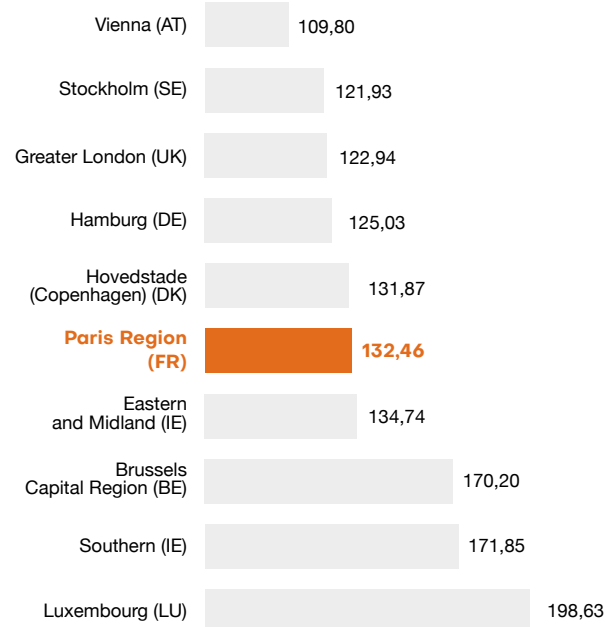
**31 of the top Fortune Global 500 corporations are headquartered in France, 28 in Paris Region**

**Top 10 Corporate Headquarters in Paris Region - Fortune Global 500**

	Revenues in million dollars	Total workforce
Total	184,106	104,460
AXA	125,578	104,085
Carrefour	91,955	363,862
Crédit Agricole	88,325	73,346
BNP Paribas	83,974	197,162
Electricité de France	81,403	165,790
ENGIE	74,144	160,301
PSA Peugeot Citroën	87,364	216,539
Renault	67,764	183,002
Société Générale	58,390	140,250

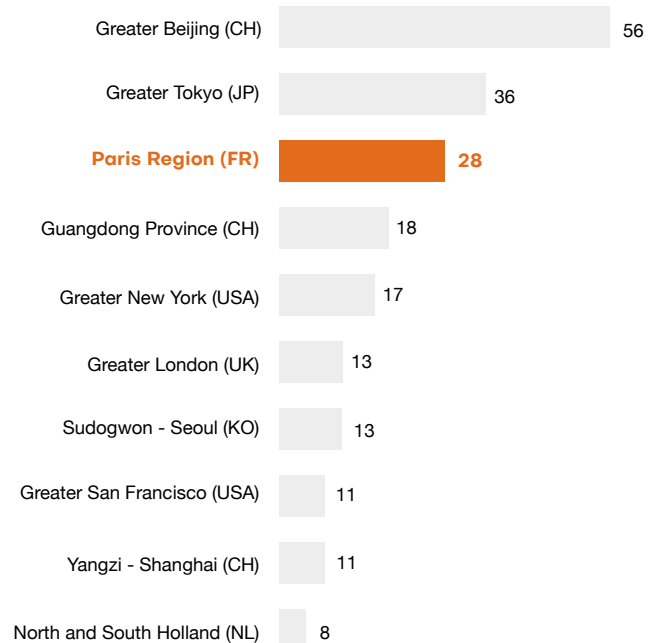
Fortune Magazine, Global 500, July 2019

## Paris Region, Europe's 6<sup>th</sup> leading region for labor productivity



Apparent Labor Productivity - Source: Eurostat GDP in million euros 2017 (NUTS 2) divided by total number employed 15 years old and over (2018), estimates. Greater London= Inner + Outer London

## Paris Region, Europe's highest concentration of Fortune 500 Global corporate headquarters



Fortune Magazine, Global 500, July 2019. Ranking by metropolitan regions. Estimates Choose Paris Region

## Paris Region, at the heart of World Trade

(2018)

### Imports

€148.5b

26.6% of France's imports

### Exports

€97.4b

20.2% of France's exports

### Paris Region's main trading partners

#### Europe

Exports: €56.4b, 57.9%

Imports: €88.7b, 59.7%

#### Asia and Oceania

Exports: €14.5b, 14.9%

Imports: €36.4b, 24.5%

#### The Americas

Exports: €16.4b, 16.8%

Imports: €15.4b, 10.4%

The top 3 most exported products are indicative of the specialization of Paris Region industries (aerospace and defense, automotive, pharmaceutical industry).

### Main imported products

**Automotive manufacturing products:**

€18.9b, 12.7%

**Hydrocarbons:**

€9.9b, 6.7%

**Telephones and communication equipment:**

€8.8b, 5.9%

### Main exported products

**Space and aeronautics manufacturing products:**

€13.5b, 13.8%

**Automotive manufacturing products:**

€9.5b, 9.7%

**Pharmaceutical products:**

€7.4b, 7.6%

French Customs, 2018



Ariane Group © Département des Yvelines

### Paris Region's leading business partners (2018)

Top 10 suppliers			Top 10 customers		
Imports			Exports		
Country	Value (€ billion)	%	Country	Value (€ billion)	%
China	20.7	14.0	United States	12.8	13.2
Germany	17.3	11.7	Germany	12.4	12.7
Belgium	13.6	9.1	Spain	6.3	6.5
United States	12.7	8.5	United Kingdom	6.2	6.3
Italy	10.6	7.1	Italy	5.9	6.1
Spain	8.6	5.8	Belgium	5.8	5.9
Netherlands	6.4	4.3	Switzerland	5.0	5.1
United Kingdom	6.3	4.2	China	3.6	3.7
Switzerland	5.3	3.6	Hong-Kong	2.5	2.6
Japan	3.6	2.4	Netherlands	2.2	2.3
Global total Paris Region *	148.5		Global total Paris Region *	94.4	

French Customs, 2018, \* including other countries

The main supplier countries are the nearby countries as well as the major powers world's economies (China, USA and Japan).

For 10 years, the United States and Germany have been Paris Region's main export partners.

### An attractive region for foreign companies

The Paris Region is the top French region in terms of hosting foreign companies and it accounts for a third of all new business creations in France.

### Europe's #2 Region for major foreign companies

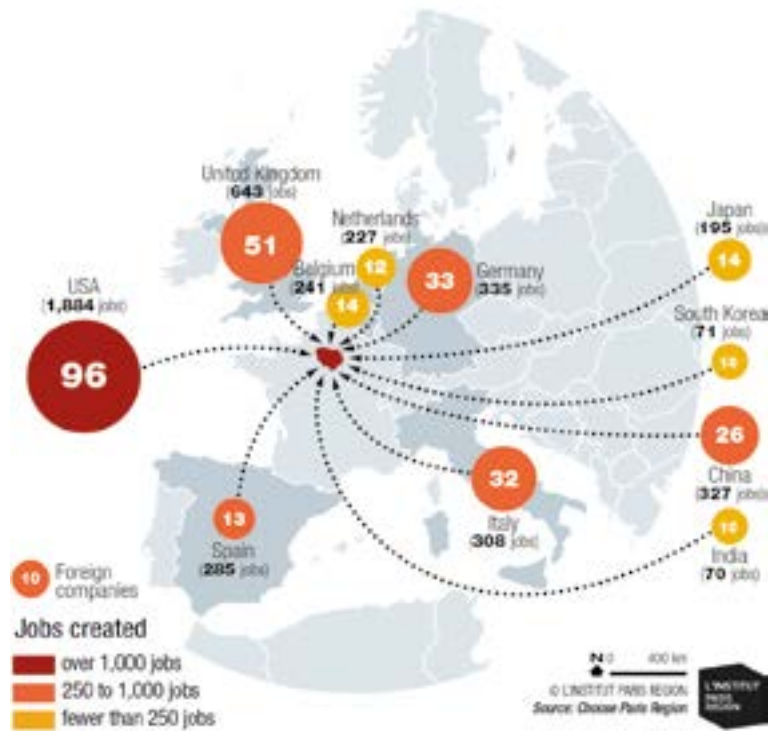
**15,100**

sites depending on a foreign company

**620,000**

jobs, 1 out of 6 jobs in Paris Region (16.7%)

### Foreign direct investments in Paris Region: Main countries by business origin and jobs created in 2018



90 countries

2018 FDI arrivals

Main countries

409 foreign companies from over 50 countries creating 6,303 jobs, including:

USA 165,000 jobs

Germany and UK 80,000 jobs each

198 from European groups (48%) 3,089 jobs

Main sectors

112 from American groups (27%) 2,070 jobs

Wholesale 132,000 jobs

73 from Asian and Oceanian groups (17.6%) 812 jobs

Industry 82,000 jobs

Scientific and technical activities 75,000 jobs

26 from other countries (Africa, Middle East) (6.3%) 232 jobs

Information and communication activities 71,000 jobs

Choose Paris Region

Insee, Esane, Clap and Lifi 2017, (data 2013)

Top Major Paris Region companies dependent on foreign groups (based on salaried workforce)		
Country	Company	Salaried workforce
Netherlands	Ranstad	92,768
USA	Euro Disney Associes	15,383
Sweden	Securitas France SARL	13,801
United Kingdom	Compass Group France	13,336
Netherlands	Meubles Ikea France	10,064
Netherlands	Select TT (Groupe Ranstad)	10,976
Netherlands	Conforama France	9,375
Germany	Metro France	8,711
Sweden	H&M Hennes & Mauritz	6,886
Qatar	GFI Informatique	6,265
USA	Cie IBM France	6,250
Spain	Zara	6,104
USA	Otis	6,049



**Very competitive set-up costs among global cities**

Overall results – Average of services and manufacturing sectors*				
	Paris	Tokyo	London	New York
Initial Investment	13,679	20,910	15,689	15,271
Rank, total investment	1	4	3	2
Total Labor	7,595	7,267	8,029	11,002
Rank, total labor	2	1	3	4
Total transportation	810	465	1,010	854
Rank, transportation	2	1	4	3
Total Utilities	280	376	367	321
Rank, electricity	1	4	3	2
Total operating costs	9,326	8,941	10,520	12,616
Rank, operating costs	2	1	3	4
Total costs	21,849	22,302	22,741	24,956
Overall rank	1	2	3	4

\*10-Year Average Annual Total Location Sensitive Costs (in thousand US\$)

Competitive Alternatives, KPMG 2016, Panel of regions and criteria



Renault Flins-sur-Seine plant © Nicolas DUPREY CD 78

**Very competitive living costs**

**Paris more affordable than London and cheaper than 11 European cities**

**Housing in Paris is globally 12% cheaper than in London (in €)**

	Paris	London
Monthly rent for 85 m <sup>2</sup> (900 Sqft) furnished accommodation in expensive area	2,630	2,918
Monthly rent for a 45 m <sup>2</sup> (480 Sqft) furnished studio in normal area	1,205	1,401
Utilities 1 month (heating, electricity, gas ...) for 1 person in 45 m <sup>2</sup> (480 Sqft) studio	88	111
Internet 8 Mbps (1 month)	20	25

**Transportation in Paris is globally 43% cheaper than in London (in €)**

	Paris	London
Monthly ticket public transport	75	167
Taxi trip on a business day, basic tariff, 8 km. (5 miles)	12	31

**Personal care in Paris is globally 60% cheaper than in London (in €)**

	Paris	London
General practitioner's appointment / Short visit to private Doctor (15 minutes)	26	99

**Entertainment in Paris is around 10% cheaper than in London (in €)**

	Paris	London
2 tickets to the movies	21	27
2 tickets to the theater (best available seats)	82	161
1 month of gym membership in business district	50	50

www.expatistan.com, 2020

# Europe's largest talent pool

Home to a large, well-educated and international workforce, Paris Region is an ideal place to source technical skills and top talent. The region's world-class universities and engineering schools are a major draw for companies looking to recruit.

## A breeding ground for talents

**6.4M**  
jobs

**23.3%**  
of all jobs in France

**36%**  
of all French executives

Insee, 2018

**5.9M salaried jobs**  
**0.5M salaried jobs**  
Insee, 2020, data 2018

**Executives' average annual net salary: €56,450**

**Average annual net salary: €34,340**  
Insee 1/19, data 2015

**7.5% Unemployment rate**  
Insee, T3 2019

**88% jobs in services**  
**7% in industry**  
**4.9% in construction**  
**0.1% in agriculture**  
Insee, 1/20, data 2018



Station F Insead © Patrick Tourneboeuf

The Paris Region's active population by professional category		
Managerial and highly-skilled occupations	1,688,314	27.7%
Service workers, sales & administrative support	1,614,023	26.5%
Skilled and mid-level employees	1,553,883	25.5%
Laborers	840,028	13.8%
Skilled tradesmen and business directors	293,645	4.8%
Farm, fishing and forest operators	5,362	0.1%
Others	99,892	1.6%
<b>Total Active population 15-64 years old</b>	<b>6,095,147</b>	<b>100%</b>

Insee, 12/19, data 2016 - Total population 15-64 years

## Characteristics of the working population in Paris Region

**Ages 25-29**  
38.4%



**Women**  
49.4%



**University graduates**  
41.4%



**Executives**  
27.4%



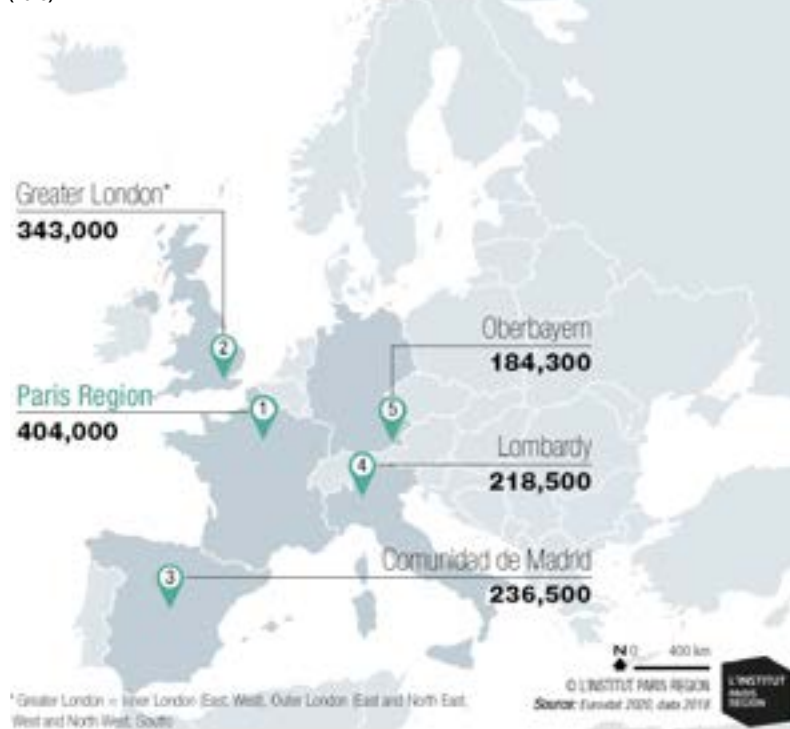
**Foreign population**  
13.9%



### A highly qualified workforce in Science and Technology

The region is particularly distinguished by its highly qualified workforce, allowing it to rise to the rank of leader in a number of sectors: financial services, aerospace, defense, new mobility, green energies, but also in the fields of health, digital transformation, creative industries, logistics, food and cosmetics.

### EU28 Top 5 regions People employed in Science and Technology (2018)



**391,000**  
jobs in Information and Communication

**344,000**  
jobs in Financial and Insurance activities

**350,000**  
jobs in Manufacturing activities

#### Sector breakdown of business sites and jobs in Paris Region

Business sector	Sites	Jobs
Scientific and technical activities; administrative and support services	297,277	921,497
Trade of automotive vehicles and motorcycles	214,742	703,961
Public administration, education, human health and social work	127,135	218,135
Construction	124,795	275,261
Information and communication	84,992	391,249
Other service activities	75,288	113,786
Accommodation and food	64,002	270,923
Transportation and storage	58,583	357,453
Real estate activities	54,183	74,864
Financial and insurance activities	52,575	343,810
Manufacture of other industrial products	31,302	156,183
Manufacturing of food products, beverages and tobacco products	8,274	50,560
Production of distribution of water; sewerage, waste management and remediation activities	2,908	76,661
Manufacturing of electrical, electronic and computer products, machinery and equipment	2,908	67,587
Manufacturing of transport equipment	547	72,403
Coking and refining	33	1,716
<b>Total Active population 15-64 years old</b>	<b>1,203,731</b>	<b>4,096,049</b>

# The highest concentration of qualified students

Paris Region offers a world-class education system with an ever increasing number of programs catering to the needs of international students and families. Universities, engineering, business and specialized schools rank among the most prestigious in the world and offer an internationally renowned education, providing each and everyone with the best adapted training curriculum.



Ecole Centrale, Saclay © Carlos-Ayesta

## The French Education system

The education system is operated by the French Public Education Authority.

Schooling is compulsory from 6 to 16 years old.

Public pre-school is available for children from 2 years old on.

### Primary and secondary Education

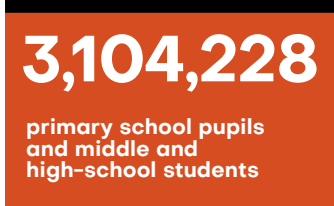


#### Primary and secondary education (public and private)

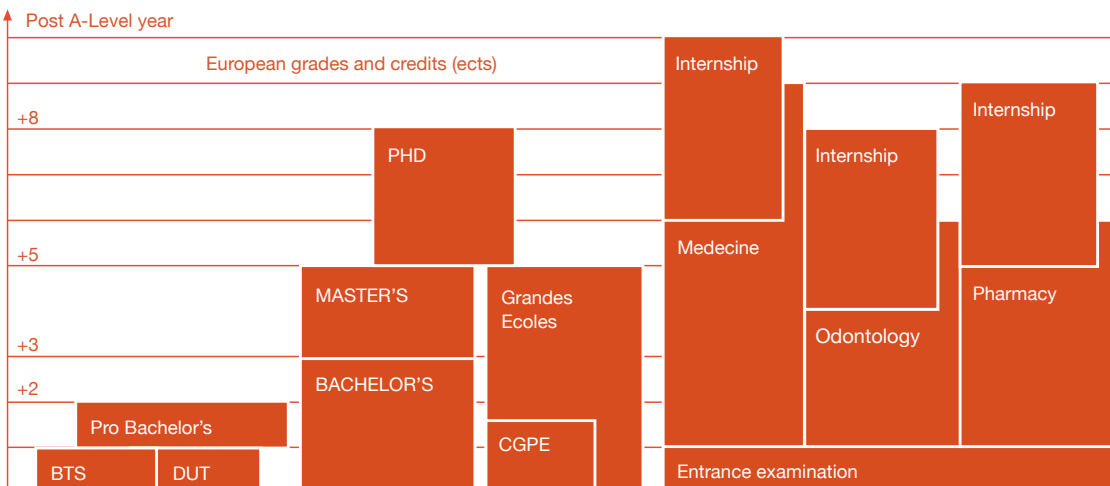
**3,200** nurseries  
**2,881** pre-schools  
**4,045** primary schools  
**1,213** secondary schools  
**811** high schools

#### Primary and secondary education (public and private)

**1,327,948** pupils  
**90.4%** in public schools  
**1,075,279** students  
**80.7%** in public middle and high-schools



### Higher Education



MESR (French Ministry of Higher Education and Research) - BTS: Technical programs - DUT: University Diploma of Technology - Grandes Ecoles: Engineering & Business schools - CPGE: class which prepares students to enter the Grandes Ecoles

A-Levels

### Highly educated students

**704,500**  
students

**41.4%**  
of the adult population holds at least a bachelor's degree

384,593 students in Paris Region's public universities

26.3% of France's student population

99 doctoral schools  
26,200 PhD students

**38%**  
of PhD students in France

16 Public universities

70 "Grandes Ecoles" (elite schools) incl. 49 engineering schools

### Main branches of higher Education

in 2018-19

Bachelor's, Master's degree and PhD: **285,234**

Business schools, management and accounting: **67,148**

Engineering schools: **43,795**

Preparatory classes for the Grandes Ecoles: **29,840**

Advanced technician programs: **45,741**

University Diploma of Technology: **17,695**

Paramedical and human services schools: **27,687**

Other university diplomas, including health: **114,094**

Others (art, architecture, private universities, etc.): **73,363**

**67,000**  
students in business schools

**44,000**  
students in engineering schools

Ministry of Education, Higher Education and Research, RERS 2019, data 2018-19, Campus France

Breakdown of the students in Paris Region's public universities in 2018-19 - Bachelor's, Master's, PhD by field of study

Fields of study	Total Students	%
Law, Political Science	60,220	15.22
Economics, Administration	48,547	12.27
Letters, Art, Languages, Humanities and Social Sciences	131,597	33.25
Sciences*	77,207	19.51
Sports	7,568	1.91
Subtotal General Fields	325,139	82.15
Health sector	52,847	13.35
University Institute of Technology Fields	17,805	4.50
Grand Total	395,591	100

\*Basic and Applied sciences / Natural and Life sciences / Interdisciplinary sciences  
Source: Ministry of Education, Higher Education and Research, data 2018-19

**33%**  
Letters, Art, Languages, Humanities and Social Science

**20%**  
Sciences



Gobelins animation school © Aurélia Blanc – Gobelins

## Educational excellence with an international outlook

The excellence in higher education and research in France is widely acknowledged around the world. Numerous Paris Region prestigious universities and higher education institutions stand out in the most reputable international rankings, such as the Financial Times ranking, the Times Higher Education, the Shanghai ranking (ARWU)... Young people benefit from prestigious universities and exceptional graduate and specialized schools.

### Prestigious Universities

**3 Paris Region Universities in the ARWU Top 100**

- Paris-Sud University #37
  - Sorbonne University #44
  - Ecole Normale Supérieure #79
- Academic Ranking of World Universities 2019

**2 of the world's 5 best Universities in Mathematics**

- Paris-Sud University #2
  - Sorbonne University #9
- ARWU Global Ranking of Academic Subjects 2018

**5 higher education institutions in the Top 200**

- Paris Sciences et Lettres – PSL Research University Paris #45
  - Sorbonne University #80
  - École Polytechnique #93
  - Paris University #130
  - Telecom Paris #188
- Times Higher Education World University Ranking 2020

**2 of the world's 5 best universities in Atmospheric Science**

- University of Versailles Saint-Quentin-en-Yvelines #2
  - Sorbonne University #4
- ARWU Global Ranking of Academic Subjects 2019



National Institute of Art History library (INHA) © Florence Humbert

## A Region attracting foreign talent

**Paris: 7<sup>th</sup> best student city in the world**

QS Best Student Cities, 2019

**31% all foreign students in French higher universities**

**Of these, 80,600 in Paris Region's universities, which is 21.3% of the region's public university students.**

**8,238 foreign PhD students, i.e. 34% of PhD students in Paris Region**

**119,500**

**foreign students in Paris Region**

## MBA and Business Schools

Financial Times Rankings (2019/20)

**3 of the Top 10 European Business Schools**

- HEC Paris #1
- INSEAD #5
- Essec #7

**Global MBA program**

- INSEAD #4
- HEC Paris #9

**3 of the Top 5 Masters in Management**

- HEC Paris #2
- Essec Business School #3
- ESCP Europe #5

**5 of the Top 15 Executive MBA programs**

- HEC Paris #1
- HEC/LSE/NYU:Stern #3
- Tsinghua University/INSEAD #9
- ESCP Europe #14
- INSEAD #19



Hec Paris © Nathalie Ounjian

## Specialized schools

**GOBELINS, the school of the image, ranked #2 best school of animation in the world**

2018 International Animation School Rankings

**Institut Français de la Mode**

- #2 best Master in Fashion Management in the world behind Fashion Institute of Technology of NY
  - #2 best Master in Art Direction and Communication in the world, behind Central Saint Martins of London
- CEOWORLD magazine, Business of Fashion, 2019

**ESMOD International, Paris, #7 best fashion school in the world**

CEOWORLD magazine, Fashion school ranking, Business of Fashion, 2019

### Foreign students in Paris Region's universities in 2018-19

	Paris Region	France	% Paris Region / France
Africa	38,117	129,341	29.5
Americas	8,103	22,432	36.1
Asia	14,514	48,027	30.2
Europe	19,745	60,004	32.9
Others	134	486	27.6
All	80,613	260,290	31

Ministry of Education, Higher Education and Research, 2018

### A growing offer of international and bilingual education

Paris Region has an extensive selection of international schools open to more than **23.000** foreign and French pupils from kindergarten to high school: **7** international public high schools and **2** scheduled for 2021 and 2023

Near **120** schools with International Sections (bilingual programs) or Binational Sections offering bicultural education and intensive schooling in **17** different foreign languages.

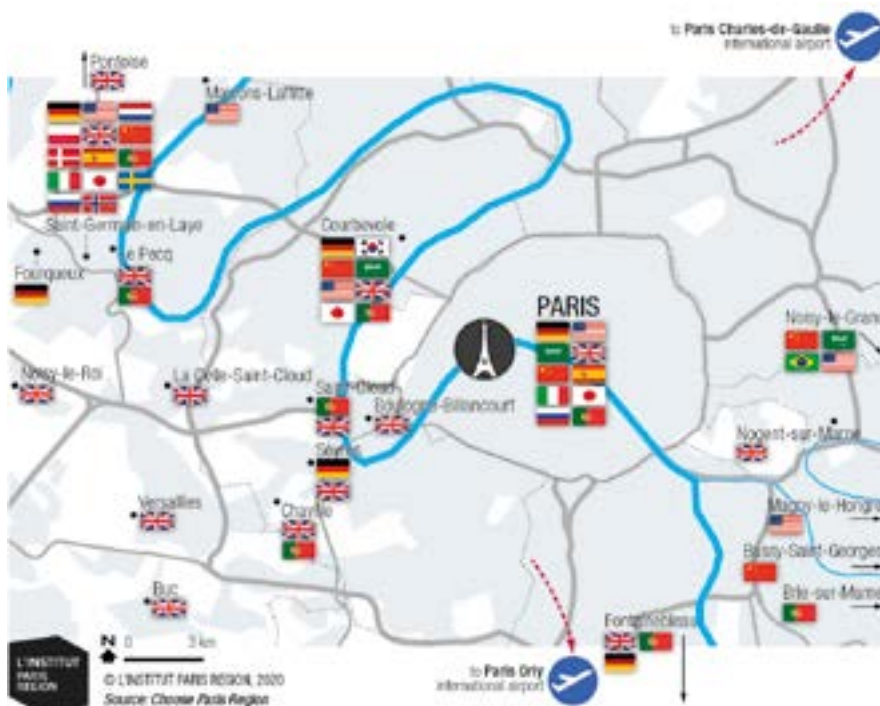
French schools with International Sections follow the national French curriculum and offer an International Section where foreign languages are taught and where some courses such as history, geography, literature are taught in a language other than French.

#### A variety of curriculum and diplomas

- Near **40** international private schools, including well-known schools:
- . British School of Paris,
  - . American School of Paris,
  - . International School of Paris,
  - . Jeannine Manuel,
  - . EIB Paris,
  - . Marymount,
  - . Deutsche Schule Paris,
  - . Liceo italiano Leonardo da Vinci,
  - . Liceo Español Luis Buñuel, etc.

The new European School in Paris-La Défense (Courbevoie) and other ongoing or upcoming school projects.

#### 165 International Sections in 17 different languages



Diplomas in Paris Region	
European Baccalaureate	Courbevoie
International Baccalaureate (IB) diploma	Paris, Maisons-Laffitte, Saint-Cloud, Verneuil-sur-Seine
A-Levels	Paris, Croissy-sur-Seine
US High School Diploma	Paris, Saint-Cloud, Verneuil-sur-Seine
ABIBAC - German Abitur Allgemeine Hochschulreife + French Baccalaureate	Paris, Combs-la-Ville, Le Raincy, Dourdan, Courbevoie, Enghien-les-Bains, Rueil-Malmaison, Buc
BACHIBAC - Spanish Bachillerato + French Baccalaureate	Paris, Noisy-le-Grand, Maisons-Alfort, Montigny-le Bretonneux, Sartrouville, Dourdan, Bois-Colombes, Sceaux, Ermont, Pontoise
ESABAC - Italian Esame di Stato + French Baccalaureate	Paris, Saint-Denis, Saint-Maur-des-Fossés, Rambouillet, Massy, Bois-Colombes, Sarcelles
OIB - French Baccalaureate with an International Option	Paris, Buc, Courbevoie, Fontainebleau, La Celle-Saint-Cloud, Nogent-sur-Marne, Noisy-le-Grand, Pontoise, Saint-Cloud, Saint-Germain-en-Laye, Sèvres, Versailles

	Elementary schools	Secondary schools	High Schools		Elementary schools	Secondary schools	High Schools
British	10	20	14	Polish	1	2	2
American	4	7	5	Danish	1	1	1
Chinese	6	7	5	Dutch	1	1	1
German	6	6	4	Norwegian	1	1	1
Portuguese	3	8	4	Swedish	1	1	1
Arab	2	4	4	Russian	1	1	1
Italian	2	3	2	Brazilian	0	1	1
Spanish	2	3	2	Korean	1	1	0
Japanese	3	3	2				

**Paris Region international education guide:**  
[internationaleducation.parisregion.eu](http://internationaleducation.parisregion.eu)

# Paris Region, an innovation powerhouse

The Paris Region is an exceptional land in terms of research and innovation. Its diversified economy is buzzing with top-ranked high-tech clusters and research centers, which generate exciting opportunities for cross-sector collaboration. Research and development in the Paris Region is mainly carried out by private companies which account for two thirds of total expenditure and represent more than 85% of design-research jobs.

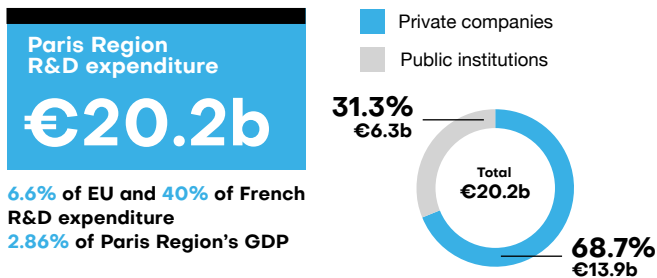


Plate-forme EVR@ – Laboratoire IBISC, Université d'Evry – Paris Saclay

## #1 in Europe for R&D

(2017)

### The highest amount of R&D expenditure in Europe

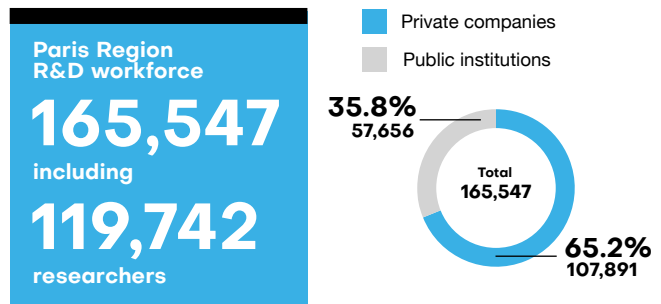


#### Main fields of R&D:

- Automotive industry **18%**
- Pharmaceutical industry **11%**
- IT activities and information services **10.0%**
- Specialized activities, scientific and technical, **7.5%**
- Aerospace **6.8%**

In the Region, more than two-thirds R&D expenses are made by companies.

### The largest R&D talent pool in Europe

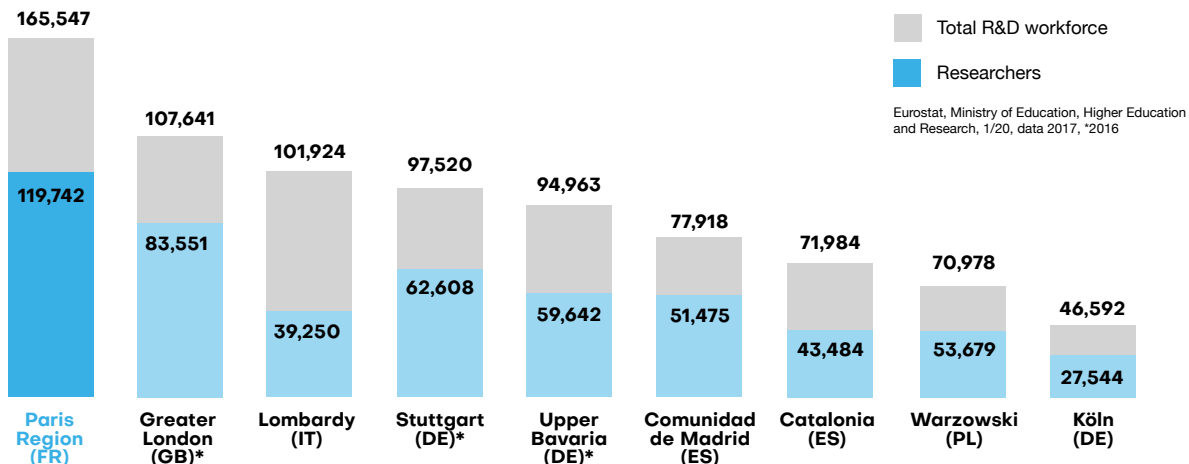


These professors, researchers, engineers, technicians and support staff work in universities, Grandes Ecoles, public institutes and companies.

5.6% of EU and 37.5% of French R&D employees  
**40.5% of the researchers in France**

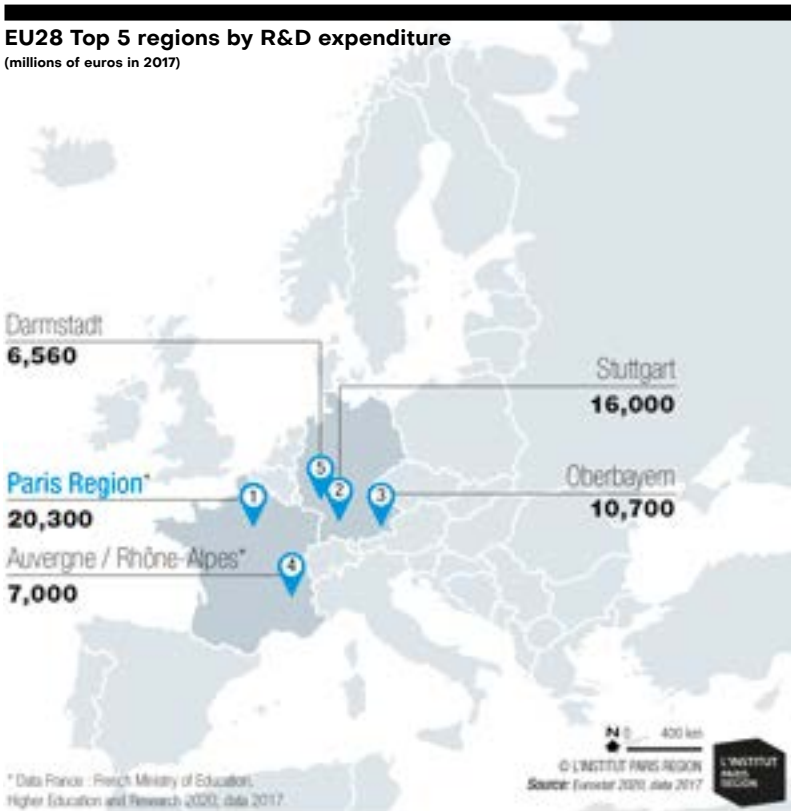
Ministry of Education, Higher Education and Research, data 2017

## Paris Region, the best place in Europe to source R&D talent





**#1** European region for research & development expenditure



**Internationally recognized technological and scientific knowledge**

**32 Nobel Prizes**

Ecole Normale Supérieure, top Nobel producing undergraduate institution in the world in 2016

The two most prestigious awards in mathematics

**11** Fields Medals

**4** Abel Prizes

**27,500** students enrolled in doctoral programs, i.e.

**37.4%** in France

Eurostat, data 2017

**99 doctoral schools**  
**8,238 foreign PhD students**

Ministry of Research, 2018-19

**5,789 foreign researchers**  
**40.2% of foreign researchers in France**

FNAK, data 2018

**At the forefront of innovation**

**7,687 patents filed, i.e 58.5% of the patents filed in France**

INPI, data 2018

Paris Region is the European leader, and accounts for **4.4%** of all European patent applications in EU-28.

**#3** region in the world in volume of papers in international journals (**51,000**) behind Beijing and Tokyo

Elsevier/scopus, data 2014

Nearly **500,000** scientific publications registered in Paris Region, mainly in the fields of medical research, physics and astronomy, engineering sciences, biochemistry, genetics, and molecular biology, according to the Scopus database, between 2004 and 2014.

L'Institut Paris Region - OST

**3** of the 10 world's most innovative research institutions

**#3** CEA Alternative Energies and Atomic Energy Commission

**#8** CNRS National Center for Scientific Research

**#9** INSERM National Institute of Health and Medical Research

The world's most innovative Research Institutions

Paris, European leader and **#9** largest science and technology clusters in the world according to the Global Innovation Index 2019

OMPI, 2019

The highest number of people employed in the fields of science and technology and scientifics and engineers in Europe

Eurostat, data 2018

# A thriving technological hub at the heart of Europe

The Paris Region is home to an exceptional diversity of sectors. Companies across all industries will find a hub that gathers the major players in their area of business and research. Paris Region's diversified economy is buzzing with top-ranked high-tech clusters and research centers. This unique landscape generates exciting opportunities for cross-sector collaboration. For example, combining IT and healthcare, or automotive and eco-technology.

8 regional competitiveness clusters make up this dynamic ecosystem.

4,360 members including:  
3,900 companies  
584 labs and teaching institutions, ...

Over  
**2,600**  
projects

**€9.2b**  
of total funding



**Aeronautics, space and defence**

336 members, incl.  
125 major groups,  
130 SMEs,  
49 labs and teaching institutions

73 projects funded since the cluster was founded  
Total funding:  
313 million €

**cap-digital**  
Paris Region

**Digital & ecological transformation**

1,032 members, incl.  
86 major groups,  
850 SME's,  
75 labs and teaching institutions  
12 investments funds  
9 urban communities

810 projects funded since the cluster was founded  
Total funding:  
1,700 million €



**Perfumery and cosmetics**

600 members, incl.  
80 major groups,  
520 SME's,  
200 labs and teaching institutions

350 projects funded since the cluster was founded  
Total funding:  
450 million €



**Rubber and polymer industry**

138 members, incl.  
11 major groups,  
98 SME's,  
4 start-ups,  
25 labs and teaching institutions

89 projects funded since the cluster was founded  
Total funding:  
265 million €



**Financial services**

500 members, incl.  
160 major groups,  
300 SME's,  
20 labs and teaching institutions

28 projects funded since the cluster was founded  
Total funding:  
80 million €



**High-tech healthcare and new therapies**

476 members, incl.  
34 major groups,  
400 SME's and startups  
40 labs and teaching institutions

371 projects accelerated by the cluster  
Total funding:  
2,073 million €



**Transport and mobility**

447 members, incl.  
44 major groups,  
312 SME's,  
35 labs and teaching institutions,  
14 local authorities & institutional bodies

260 projects funded since the cluster was founded  
Total funding:  
1,120 million €



**European innovation and technology cluster in digital and Deep Tech**

900 members, incl.  
150 major groups,  
600 startups / SME's / mid-cap companies,  
140 labs and teaching institutions,  
20 investors  
20 local authorities & institutional bodies

625 projects funded since the cluster was founded  
Total funding:  
Over 3.18 billion €

# Cutting-edge digital infrastructure

The Fiber to the Home Infrastructure currently covers almost 100% of the Region, making the system available to everyone in the Region regardless of if they live in a dense urban environment or rural areas. The Region has a dense data center and telecom infrastructure, making it the 4<sup>th</sup> densest region in this sector in Europe for these types of uses.

## A smart and connected region

Launched in February 2013, the High-Speed Broadband France Plan aims to cover the entire country by 2022, by proposing high-speed internet access to all houses, businesses and government departments.

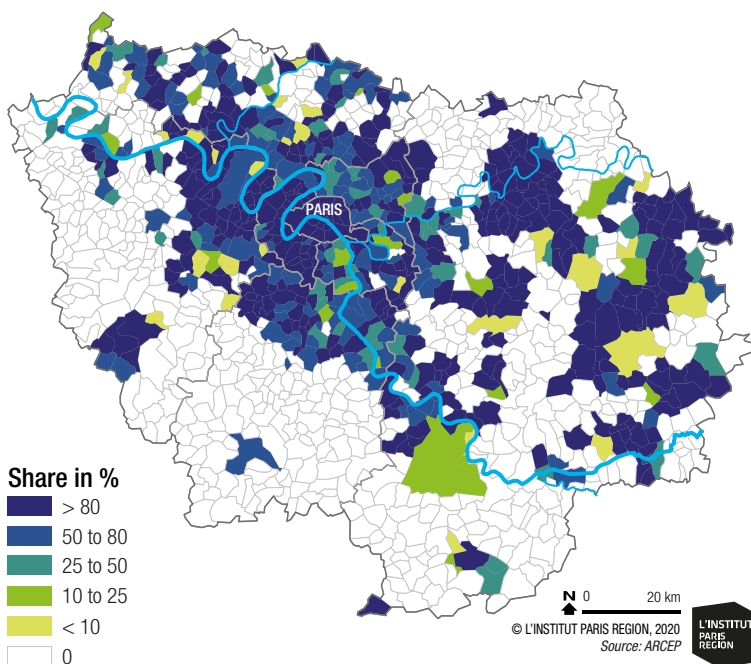
The Paris Region aims to be the first region in Europe to be entirely equipped with fiber-optic cables by 2020/2025.

## Reliable telecommunications and networks

- 4G Mobile telephony**
- 4 operators
- 99.8% of the population is covered

ARCEP

**FttH deployment in Paris Region**  
**Share of potentially connected premises at the city level**  
 State of the art 1<sup>st</sup> quarter 2019



Datacenter Ecole Polytechnique © EcolePolytechnique J.Barande

# Europe's largest scope of real estate solutions

Paris Region is a constellation of diverse, specialized districts that make it a highly attractive location for a range of industries, research areas and lifestyles.

Its real estate market stands out for its size and liquidity with an offer of 55 million m<sup>2</sup>.

Paris Region is home to Station F, the world's biggest startup campus, but also to hundreds of other incubators and accelerators in the region to help entrepreneurs grow their company.



STATION F Facade © Patrick Tourneboeuf

## Office Space

ORIE and BNP Paribas Real Estate, 2018/19

Surface area

**54.25 million m<sup>2</sup>**

ORIE, 2018

Around **1,500** business activity areas

**34** business districts  
Paris La Défense, **4<sup>th</sup>** largest business district in the world

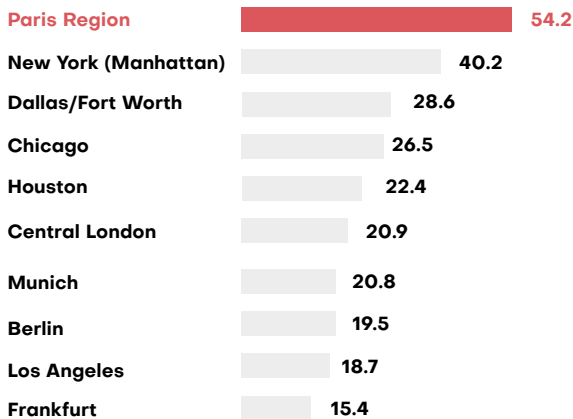
Immediate supply **2.8 million m<sup>2</sup>**  
Vacancy rate **5.1%**  
Take up **1.7 million m<sup>2</sup>**  
Space under construction **1.5 million m<sup>2</sup>**

BNP Paribas Real Estate, T3 2019

**Prime rent Central Paris**  
**880€/m<sup>2</sup>/year**  
**Prime rent Paris Region**  
**€399/m<sup>2</sup>/year, excluding taxes and charges for second-hand space**  
**€400/m<sup>2</sup>/year, excluding taxes and charges for new or refurbished space**

BNP Paribas Real Estate, Immostat, 2019

## Office stock in major world capitals in million m<sup>2</sup>



Q3 2018 for Europe, Q2 2018 for the USA  
ORIE for Paris Region, BNP Paribas Real Estate for other countries

## Paris Region more affordable than London in occupancy costs

Top 15 office space market by occupancy costs (2019) USD per workstation			
Rank	Country	City	Occupancy costs m <sup>2</sup> /year in \$US
1	China	Hong Kong Central	322.00
2	United Kingdom	London West End	222.70
3	China	Hong Kong Kowloon	208.67
4	USA	New York Midtown Manhattan	196.89
5	China	Beijing (Finance Street)	187.77
6	China	Beijing (CBD)	177.05
7	USA	New York Midtown Manhattan	169.86
8	Japan	Tokyo (Marunouchi/Otemachi)	167.82
9	India	New Delhi (Connaught Place - CBD)	143.97
10	United Kingdom	London (City)	139.75
11	USA	San Francisco (Downtown)	130.51
12	China	Shanghai (Pudong)	128.51
13	USA	San Francisco (Peninsula)	116.28
14	Singapore	Singapore	114.28
15	France	Paris	110.02

Global prime office occupancy costs, 2019, CBRE

### Everything you need to scale up

Coworking areas, business centers, shared offices...  
The number of places where you can work as if you were at the office without going there has increased impressively in Paris Region in recent years.

3/4 of the sites have been created in recent years.

**>900**  
"third places," providing flexibility to business people, comprising:

- 223 coworking spaces
- 218 shared offices
- 87 fablabs
- 216 business creation or development support sites
- 200 micro-working spaces in stations
- 1,000 third places by 2021

### The world incubator capital

Over 130,000 m<sup>2</sup> of space for start-up incubators have been created in recent years, including 34,000 m<sup>2</sup> at Station F, the largest incubator in the world hosting 1,000 start-ups, with some 3,000 desks.

By 2020, an additional 65,000 m<sup>2</sup> will be made available.

L'Institut Paris Region, 2020, data 2018-19 - Apur, Blue Office, Crocis, Mairie de Paris, Makery, MENESR, Multiburo, NCI, Neo nomade, Nextdoor, PRM, Région Ile-de-France, Regus, Servcorp, Stop & Work, Technomap, L'Institut Paris Region © L'Institut Paris Region, Ernst and Young/ULI

### The Grand Paris Express, a great opportunity for urban projects

To enhance its attractiveness and competitiveness in our globalized world, the Paris Region is undertaking major infrastructure and urban planning projects, including the Grand Paris project, the largest urban project in Europe providing a new transport network, new residential projects, office districts, and R&D hubs open to international competitions to reinvent Paris Region. The Grand Paris Express is paving the way for a substantial increase in housing stock in the Paris Region. The construction of Grand Paris Express stations is accelerating the urban renovation process and the renewal of the industrial zones around Paris.

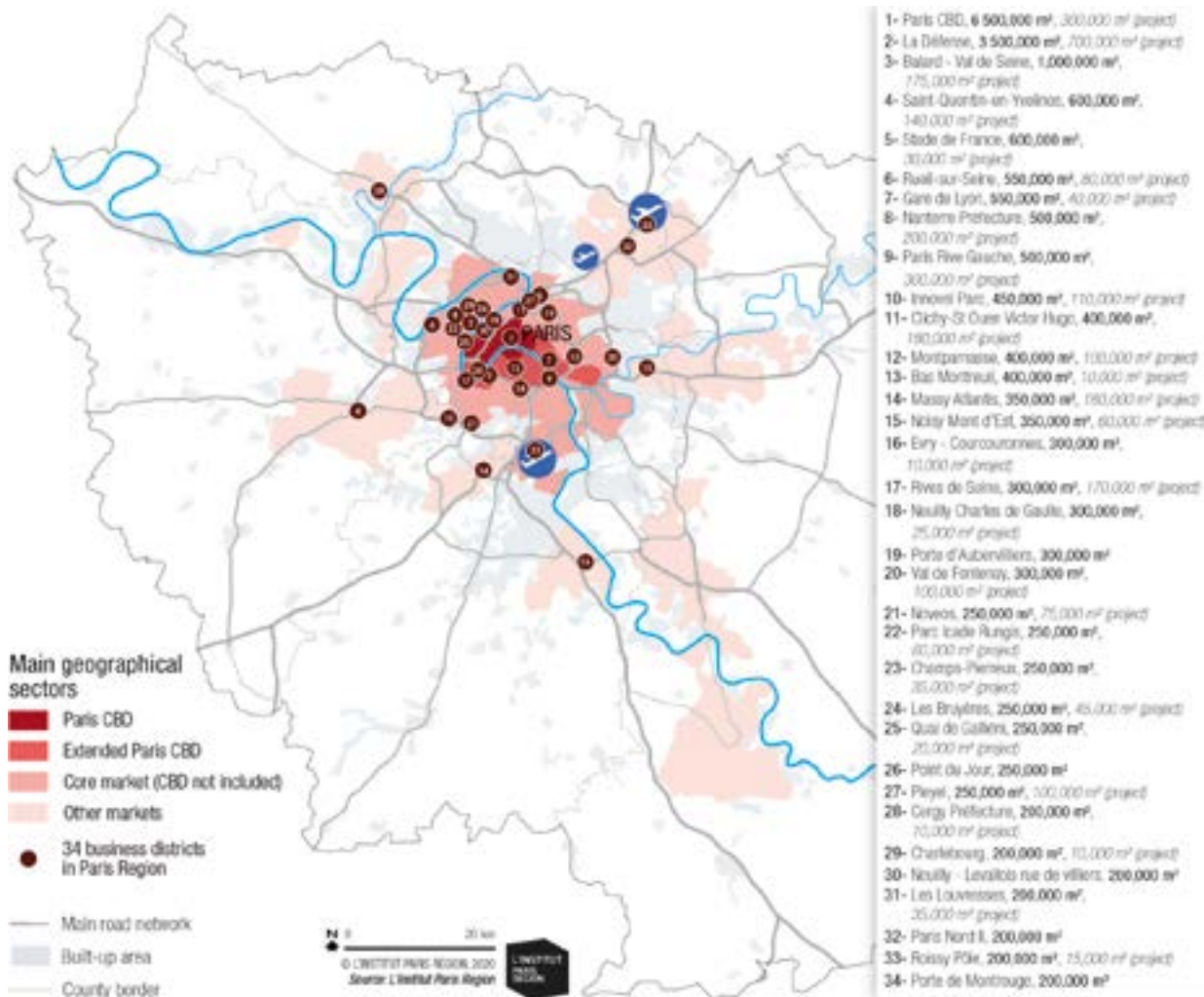
Creation of 250,000 to 400,000 housing units. 10,000 and 15,000 housing units per year within a 800 m radius around the future stations.

9 related real estate projects, nearby Grand Paris Express stations, have already been awarded to real estate operators

In total, 1 million m<sup>2</sup> of urban projects will be connected to Grand Paris Express stations.

These 9 projects represent 1,900 housing units and 32,000 m<sup>2</sup> of offices and retail spaces.

### The Paris Region Office Market





Paris CDG Airport © Aéroport de Paris - Burtot

# A world-class transportation network

Located at the crossroads of Europe, companies based in Paris Region can easily access a market of 500+ million customers and all major European cities. The Region is easy to get to, with 3 international airports and 7 TGV (high-speed train) stations. As the Region prepares to host the 2024 Olympic Games, several large public infrastructure projects are currently in development and will be constructed by 2030, including the Grand Paris Express.

## Reach 513 million consumers in under 2 hours by plane

Paris Region's high quality infrastructure ensures the seamless flow of people, goods, capital and data.

### By plane

Paris Aéroport, 2018, \*2019

- 3** international airports
- 716,524** aircraft movements
- 165** airlines
- 119** countries served from Paris Region
- 357** destinations served from Paris

**108M**  
passengers

**12.2M**  
connecting passengers

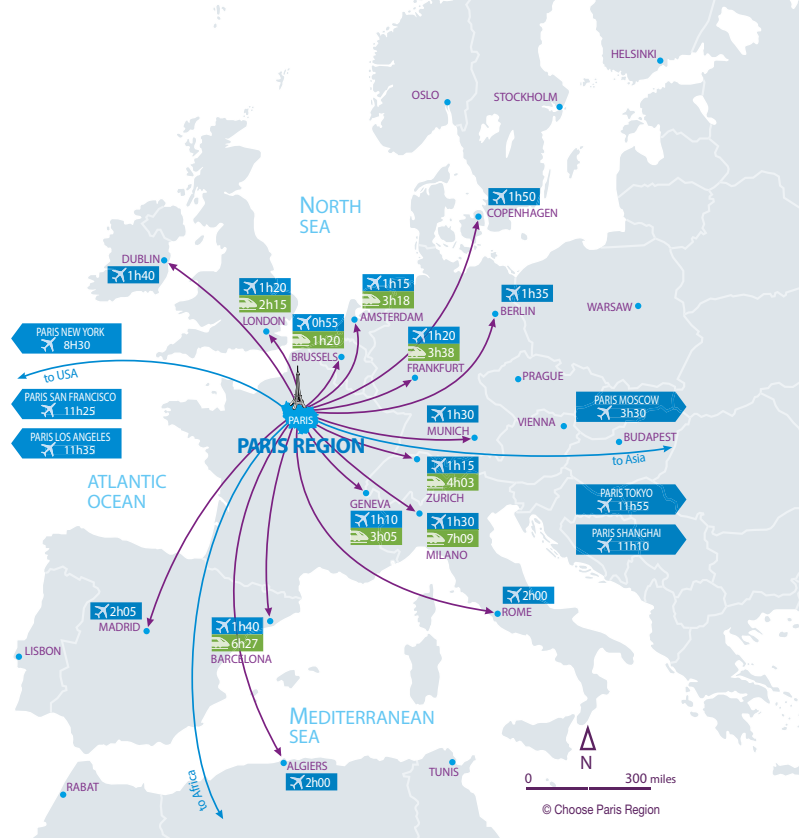
**Paris-Charles de Gaulle (CDG)**  
#2 in Europe for passenger traffic  
**76.1 million** passengers  
**498,175** aircraft movements

**Paris-Orly**  
**31.8 million** passengers  
**218,349** aircraft movements

**Paris-Le Bourget**  
Europe's leading business airport  
**100,000** passengers  
**57,295** aircraft movements

**10** airfields and **1** heliport

## Paris Region, connected to Europe and the world



### By train

SNCF, Aarafer, 2017 and Ile-de-France Mobilités

**10** main stations, including  
**7** TGV (high-speed train) stations

**1 million** passengers on **3,550** trains per day on the Paris Region railway network  
**5** railway stations have traffic that exceeds **100,000** travellers daily  
Gare du Nord, #1 busiest European station  
**19 million** TGV passengers travelling from Paris to main European destinations  
**4,700 km** of railway tracks, of which **636 km** of LGV (High Speed Line)

## An efficient transit and mobility system at the regional level

Public transport, bicycles, electric scooters and scooters, self-service vehicles, autonomous cars, buses and driverless metros: the street is divided up thanks to a very diverse offer which is constantly expanding.

Type of trips	Number of trips / weekday	Evolution 2010/2018
Walking	17.2 million	+ 9 %
Car	14.8 million	- 5 %
Public transport	9.4 million	+ 14 %
Bike	840,000	+ 30 %
Motorized two-wheeler	420,000	- 25 %
Others	380,000	x 2
<b>Total</b>	<b>43 million</b>	<b>+ 5 %</b>

Source: Île de France Mobilités (2019)

### 4.7 billion trips by public transport in Paris Region

Mode of traffic	Lines	Millions of trips*
Subway	16	1,560
Train - RER** (SNCF - RATP)	14	1,409
Tramway	10	315
Bus/night buses	1,510	1,436
<b>Total</b>	<b>1,550</b>	<b>4,720</b>

Île de France Mobilités d'après Optile, RATP, SNCF (2017, \*2016) \*\* High-speed metro

### Public transport

**2,753 km of metro, train, RER and tramway network**  
**6,200 regional trains every day**  
**At rush hour, over 650 trains simultaneously.**  
**385 stations at key points throughout the network**  
**270 green buses (electric or gas) in circulation, more than 5,000 by 2025**  
**47 night bus lines serving 200 towns and cities**

### Shared transport for alternative mobility

A growing offer with innovative and green alternative transport solutions to get around without polluting the environment.

**Self-service and free-floating bikes, cars and mopeds**

**850,000 trips per day +30% since 2010.**  
**40% of trips during the week are to go to work.**

**Velib Metropole, self-service bicycle system**  
**16,000 bikes:**  
**30% of electric power-assisted bicycles,**  
**70% of traditional bicycles,**  
**1,364 stations in 55 municipalities**  
**Around 70,000 trips per day**

**Véligo Location, a long-term rental service (6 to 9 months) of electrically assisted bikes**  
**10,000 Véligo Location bikes**

**Free-floating bike, scooter and moped operators :**  
**E-Bikes: around 4,000**  
**E-Mopeds: around 4,000**  
**E-Scooters: several hundreds**

**Freefloating cars**  
 — Carsharing (car clubs)  
 — Carsharing peer to peer

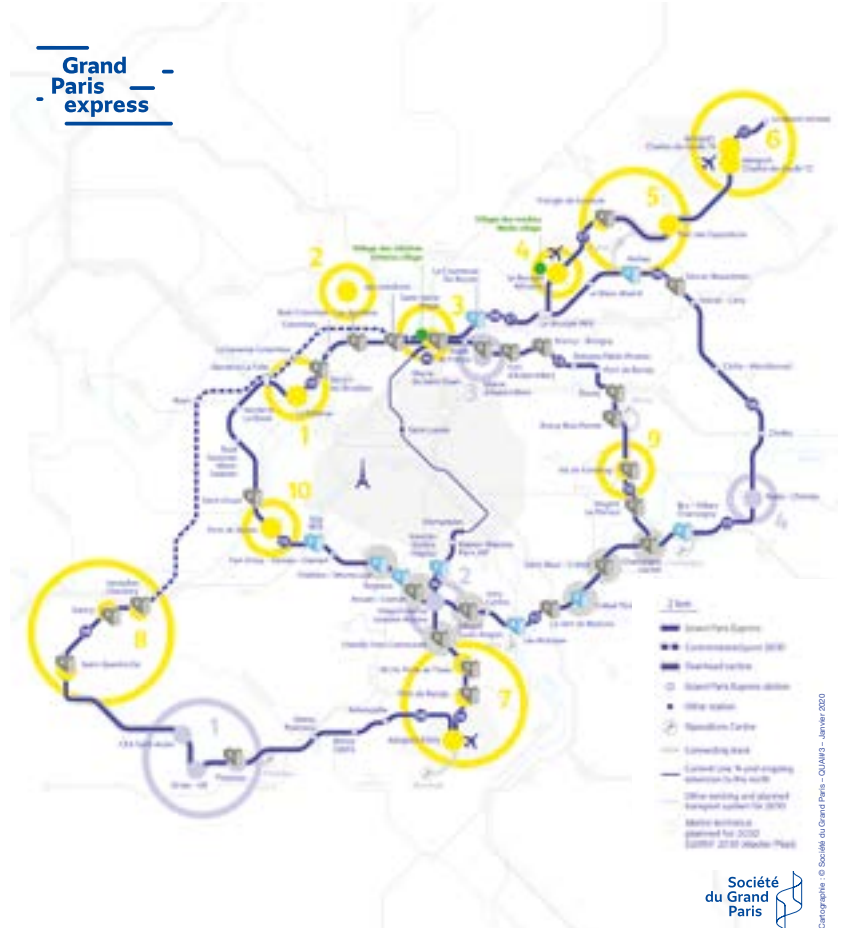
L'Institut Paris Region, Ile-de-France Mobilités, Velib Metropole

## A wide public transportation network, extended further by the Grand Paris Express

The largest urban development project in Europe providing a new transport network. Heavy investments in modernizing and expanding the public transport network.

- 200km of additional automated metro lines**
- 68 new stations**
- 2 million passengers everyday**
- €35b invested through 2030**
- The project is set to link Paris Region's 3 airports, as well as business districts and scientific clusters.**
- 1 million m<sup>2</sup> of construction projects associated with the Grand Paris Express project**
- 300,000 m<sup>2</sup> of commercial space**
- Over 7,000 residential projects**

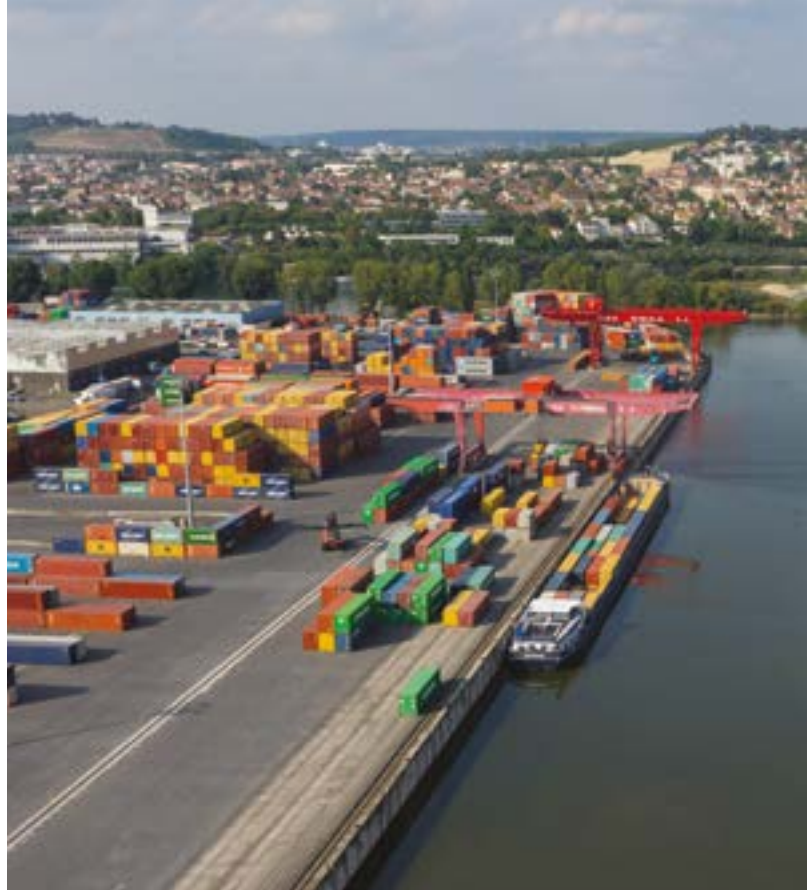
## The Grand Paris Express urban sites



- Paris 2024 Olympic and Paralympic venues**
- Business hubs**
  - 1. La Defense: World's premier business district
  - 2. Courcouronnes: Second largest area just off Paris and the largest high-speed platform in Paris region, rich in terms of jobs and activity
  - 3. Saint-Denis Pleyel: Cultural, residential, scientific, educational, digital environment
  - 4. La Bourgnon: No. 1 business district in Europe
  - 5. Triangle de Gennevilliers: International business center including the Olympic Committee Centre
  - 6. Grand Noisy: No. 1 airport platform in Europe
  - 7. City - Nanterre: Logistics engine, No. 1 food producer worldwide, the world's largest and best the "City of the International" from 2016
  - 8. Satory - Saint-Quentin - Versailles: Aerospace and military hub
  - 9. Val de France: Sport, culture and leisure in Seine-Saint-Denis
  - 10. Front de Seine - Val de Seine: Paris's digital and cultural center at the heart of the Grand Paris
- University research hubs**
  - 1. Paris Saclay: No. 1 research and higher education hub in Europe
  - 2. Val de la Bièvre: Startups, innovation and No. 1 school
  - 3. Campus Condorcet: No. 1 European university hub, No. 1 scientific and social sciences
  - 4. Cité Descartes: No. 1 higher education hub in the western Paris region
- National real-estate projects**
  - Construction (speculation) designed as the urban centers, designed at the same time as the station construction or a few years later
  - 100+ related projects already
  - 20 related projects under construction
  - 100+ projects planned

# Cost-effective logistics

Paris Region sits at the geographic heart of Europe. An outstanding transport and telecommunications infrastructure connects the French capital to all of the world's major economic regions. Paris Region benefits from a catchment area with an estimated 25 million inhabitants within a 200-kilometre radius. Paris Region is an ideal hub for logistics and shipping, with very efficient infrastructure to get your goods to market.



Port of Gennevilliers © HAROPA - Ports de Paris

## Significant capacity in logistics real estate

**Warehouses > 5,000 m<sup>2</sup>**

**Surface area: 19 million m<sup>2</sup>** (ORIE 2018)  
**Take up: 1.1 million m<sup>2</sup>** (Immostat, 2018)  
**Available now: 1.1 million m<sup>2</sup>** (as of 1/1/19)  
 ORIE, Immostat, BNP Paribas Real Estate

## Very competitive logistics costs

Prime rents in Q2 2019 per year Warehouses over 5,000 m <sup>2</sup> (in €)	
London Heathrow (United Kingdom)	179
Helsinki (Finland)	120
Dublin (Ireland)	106
Berlin (Germany)	86
Munich (Germany)	84
Barcelona (Spain)	82
Stockholm (Sweden)	80
Frankfurt (Germany)	78
Hamburg (Germany)	74
Madrid (Spain)	74
Warsaw (Poland)	64
Amsterdam - Rotterdam (Netherlands)	65 / 68
<b>Paris Region (France)</b>	<b>56</b>

European Logistics Market, Property Report, 8/2019 (data Q2 2019)  
 BNP Paribas Real Estate - Panel of regions

## Air, road, waterway and railway logistics

Paris CDG Airport, Europe's  
**#1**  
 for cargo

**Air: 2.20 million tonnes of freight and mail handled**  
**80 stands for Cargo aircraft at Paris-Charles de Gaulle**

**About 90% of the national cargo is handled at Paris-Charles de Gaulle airport**  
 ACI Europe Statistics, Aéroports de Paris, 2018

**#1** French river port  
**#2** Europe's

**60 urban ports**  
**10 multimodal platforms**  
**500 km of navigable waterways**  
**1,000 ha of port areas**  
**6 container terminals**  
**4 rail/road terminals**  
**Valenton #1 Rail/Road terminal in France**  
**Waterway: 25 million tonnes of goods**  
**179,000 TEUs were handled**  
 Haropa, 2019

Europe's  
**#1**  
 road network

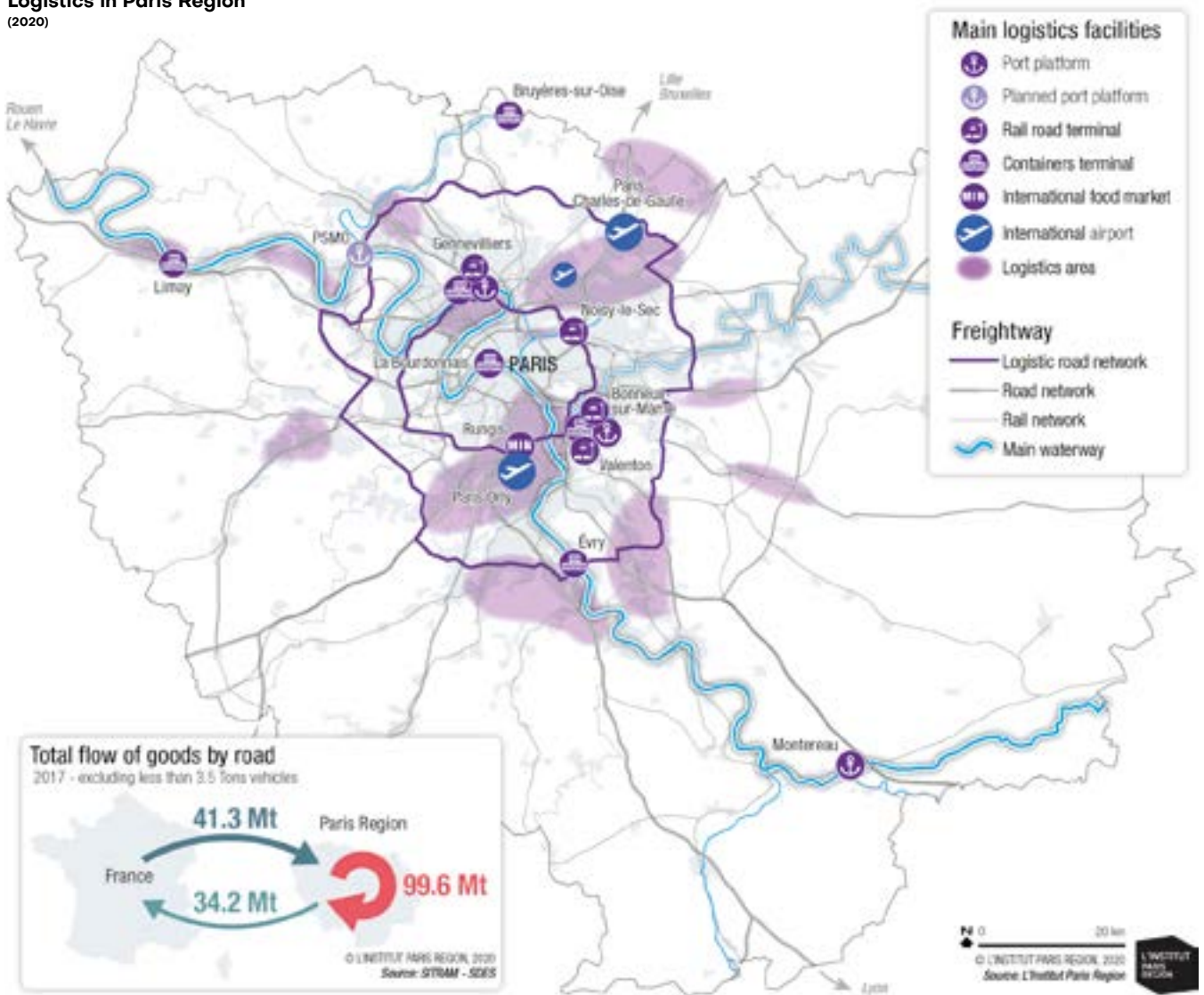
**12,000 km of roads, including 497 km of national roads and 613 km of highways**  
**Freight 175 million tonnes of goods**  
 SOes, TRM survey, 2017

**Rail freight**

**10 million tonnes of goods by rail, including 1.5 million through Paris Region ports**  
 Setra 2014



**Logistics in Paris Region**  
(2020)



**Flow of goods through main ports in Paris Region**

	Waterway (thousand tons of goods)	Containers (TEUs*)	Railway (thousand tons of goods)
Gennevilliers	3,381	116,704	539
Limay	1,304	4,818	495
Bonneuil-sur-Marne	945	14,966	499
Bruyères-sur-Oise	351	3,579	0
Evry	423	0	0
Précy-sur-Marne	85	4,820	0
Paris-La Bourdonnais	67	13,047	0

\* Twenty-Foot Equivalent Units  
Haropa- Port de Paris, 2019, data 2018



Vivatech © Jean-Claude Guilloux. Vivatech

# An exceptional place for events

The Paris Region has this almost unique characteristic in the world of being a leading destination both in the leisure tourism segment and that of business. More than 400 trade fairs, 1,200 congresses and 3,000 events are held each year. With approximately 700,000 m<sup>2</sup> of floor space, it offers the richest and most varied range of reception facilities for business events in Europe.

## A real know-how in hosting major trade shows

CCI Paris ile-de-France, data 2019

The #1 offer of exhibition space in the world

**700,000 m<sup>2</sup>**

**22** exhibition and conference venues

**446** trade shows, including **230** professional trade shows and **226** public trade show, including **108,153** exhibiting companies, including **32,280** foreign companies (30.8%)  
**9.4 million** visitors, including **842,547** foreigners (8.9%)  
**€5b** in economic benefits

**73,300** jobs generated by trade shows  
**€22.6b** turnover by exhibiting companies at trade shows, of which **€10.3b** realized with foreign customers  
**7 million** contracts concluded at trade fairs

**446**

trade shows

**1,200**

conventions

**9.4M**

visitors

**Top 10 professional and public trade shows held in Paris Region (by numbers of visitors and exhibiting companies)**

Trade Show Name	Business sector	Visitors (1st visit)	Exhibiting companies	Year
Mondial de l'Automobile / Paris Motor Show	Transport, logistics, traffic and related equipment	1,068,194	500	2018
Salon International de l'Agriculture / Paris International Agricultural Show	Agriculture, horticulture, livestock farming, floristry, fishing and related equipment	637,519	990	2018
Foire internationale de Paris	Multi-sector tradeshow and trade fairs	467,855	2,236	2018
Salon international de l'Aéronautique et de l'Espace / International Paris Air Show	Defence, civil and military security	270,430	2,419	2017
Salon Nautique International de Paris / Paris Boat Show	Tourism, sports and leisure activities	163,930	650	2018
Paris Games Week	Tourism, sports and leisure activities	197,922	180	2017
Maison&Objet	Home decor, interior design architecture and lifestyle culture	157,882	5,614	2018
SIMA, Mondial des Fournisseurs de l'Agriculture et de l'Elevage / Paris International Agribusiness Show	Agriculture, horticulture, livestock farming, floristry, fishing and related equipment	123,378	849	2017
Salon du livre de Paris / Paris Book Fair	Art, culture, music and shows	111,809	883	2018
Salon des vins des vignerons indépendants / Independent winegrowers' wine fair	Food, hotel and restaurant amenities	80,342	6,913	2018

**Conference and exhibition centers in Paris Region (2020)**



**The place to meet**

The Paris Convention Center, the largest convention center in Europe, made-to-measure spaces for large-scale international conferences 15 minutes from the Eiffel Tower, in the heart of the Paris Expo Porte de Versailles Park. It can accommodate up to 35,000 people in gigantic, fully modular spaces.

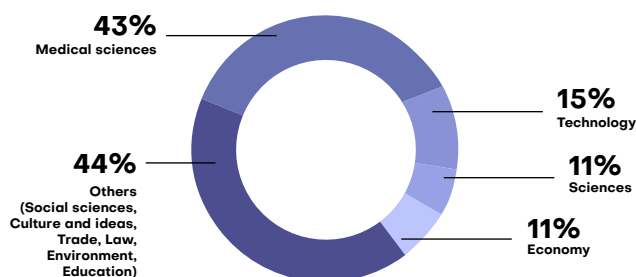
**1,200 conventions per year in Paris Region**

- OTCP, 2018
- 1,192 conventions in 335 venues
- 882,400 participants
- 32% were foreign visitors (298,600)
- €1.4b in economic benefits
- 22,650 jobs created by conventions

Paris, the world's # 1 leading destination by number of meetings organized in 2018				
City	#meetings	Rank by #meetings	#participants	Rank by #participants
<b>Paris</b>	<b>212</b>	<b>1</b>	126,343	2
Vienna	172	2	104,775	3
Barcelona	163	4	134,838	1
Berlin	162	5	87,623	4
Madrid	153	3	71,885	5
Lisbon	152	6	67,382	7
London	150	7	54,788	8
Singapore	145	8	69,261	6
Prague	136	9	42,451	10
Bangkok	135	10	53,668	9

ICCA City ranking measured by number of meetings organized in 2018 (12/6/19)

**Breakdown of conventions by business sector (2018)**



# The finest lifestyle

Life in the Paris Region offers something for everyone. There's a reason why Paris Region is the #1 destination on the planet: with 50 million visitors each year, the area is synonymous with "art de vivre", culture, gastronomy and history. Leisure and entertainment options in the Region are practically unlimited - cinemas, shows, theaters, concerts, operas, shopping at its best, gourmet restaurants, cafés, sports clubs, sport events and more... The Region is also committed to improving the environment, preserving biodiversity and reducing carbon emissions.



Moret-sur-Loing © J.P. Chasseau CDT77

## A great place to live in

**5.7 million** housing units

**72% flats,**  
**4.1 million**

**26.3% houses,**  
**1.5 million**

	Private housing rents in Paris Region			
	Paris	Inner suburbs	Outer suburbs	Paris Region
Surface in m <sup>2</sup>	50	52	57	53
Rent in €/m <sup>2</sup>	23.3	16.9	13.8	13.8
Average monthly rent in €	1,165	877	794	960

OLAP, 2019, Average rent as at 1/1/19

## A green region

**75%**

green space,  
forests and water

- 50%** agricultural space
- 28%** wooded areas, natural world
- 23%** urban space
- 1%** water
- 4** regional nature parks representing **18%** of the land area (**218,520 ha**), **2** in project
- 35** "Natura 2000" sites

More than **700** sites of ecological interest  
**15,171 ha** in organic farming  
**Short food circuits are in place for 800 farms (16%)**  
**95,820 ha** of forest open to the public  
**67** sustainable neighborhoods in Paris Region  
**113,000** homes programmed within these accredited neighborhoods.  
**250,000** inhabitants of the Paris Region should eventually live in one of these exemplary neighborhoods.  
**A very high level of urban services (water, waste, energy...)**

IAU/MOS 2017, Insee, IAU IdF

## A population in good health

The French health care system is one of universal health care largely financed by government. It is unique in the world, as everyone receives the same high level of care and treatment regardless of income. The Paris Region is the leading European region for pharmaceuticals and has the largest hospital system in Europe.

- 9,505** general practitioners
- 9,451** dentists
- 4,321** drugstores

## An unrivalled cultural offering

- 307** cinemas, **1,073** screens
- 361** theaters
- 5** opera houses
- 47** foreign cultural institutes and centers (FICEP)
- 65** million visitors in the top 10 cultural sites in Paris
- 5.6** million visitors attending the **10** largest exhibitions in Paris in 2018
- 1/3** of the regional on the territory is remarkable for its built or landscape heritage
- 271** villages of characters

### 5 Unesco sites (2019)

- Palace of Versailles
- Paris, the Banks of the River Seine
- Fontainebleau Château and Park
- Medieval City of Provins
- Le Corbusier's architectural work

**4,000**

historic monuments

**140**

museums

**5**

of the Top 15 European most visited exhibitions

## Inspirative

The Paris Region is a popular setting for French and international films.



Ride in Saint-Germain-en-Laye forest © CRT IDF Tripelon-Jarry

### Iconic touristic attractions

Top most visited tourist sites in Paris Region (millions of visitors - 2018)	
Disneyland® Paris	15.1
Notre-Dame de Paris*	12
Sacré Cœur de Montmartre*	11
Louvre Museum	10.1
Palace of Versailles	8.1
Eiffel Tower	6
Pompidou Centre	3.5
Orsay Museum	3.3
Cité des Sciences et de l'Industrie	2.2
National Natural History Museum	2.04
Notre-Dame de la Médaille miraculeuse Chapel*	2
Arc de Triomphe	1.7
Quai Branly Museum	1.3
Sainte-Chapelle	1.3
Army Museum	1.2
Atelier des Lumières	1.2
Petit Palais	1.2
Louis Vuitton Foundation	1.14
Grand Palais	1.1
Cité médiévale de Provins	1

\* free admission, estimate - CRT Paris Ile-de-France, 2020 data 2018

**3**  
of the world's most visited museums

**#1** The Louvre  
Centre Pompidou  
Musée d'Orsay

Top cultural events in Paris Region (By number of visitors - 2018)	
European Heritage Days*	500,000
Techno Parade*	300,000
Solidays	212,000
Medieval Shows in Provins	183,300
Download Festival	120,000
Lollapalooza Paris	120,000
Rock en Seine	90,000
International Contemporary Art Fair (FIAC)	72,500
Art Paris Air Fair	58,789

\* free admission, estimate - Source: CRT Paris Ile-de-France, 2020 data 2018

(Insee, CRT Paris Ile-de-France, 2020, data 2018) AECOM - The Art Newspaper, Special Report, Number 311, April 2019.

### The world's favorite tourist destination

**50.1 million** tourists, including **22.2 million foreigners (44.3%)**  
**191.9 million** night stays, half the total night stays in France, including **101.9 million** for international tourists (**53.1%**)  
**€21.7b** in economic benefits  
**120,000** businesses  
**511,000** jobs

CRT Paris Ile-de-France, 2019, data 2018

### One of the largest hotel facilities in the world

**156,880** rooms  
**71 million** hotel night stays, half the total night stays in France  
**2,465** hotels  
**10** luxury hotels

Insee, data as 01.01.19, CRT Paris Ile-de-France, 2019, data 2018

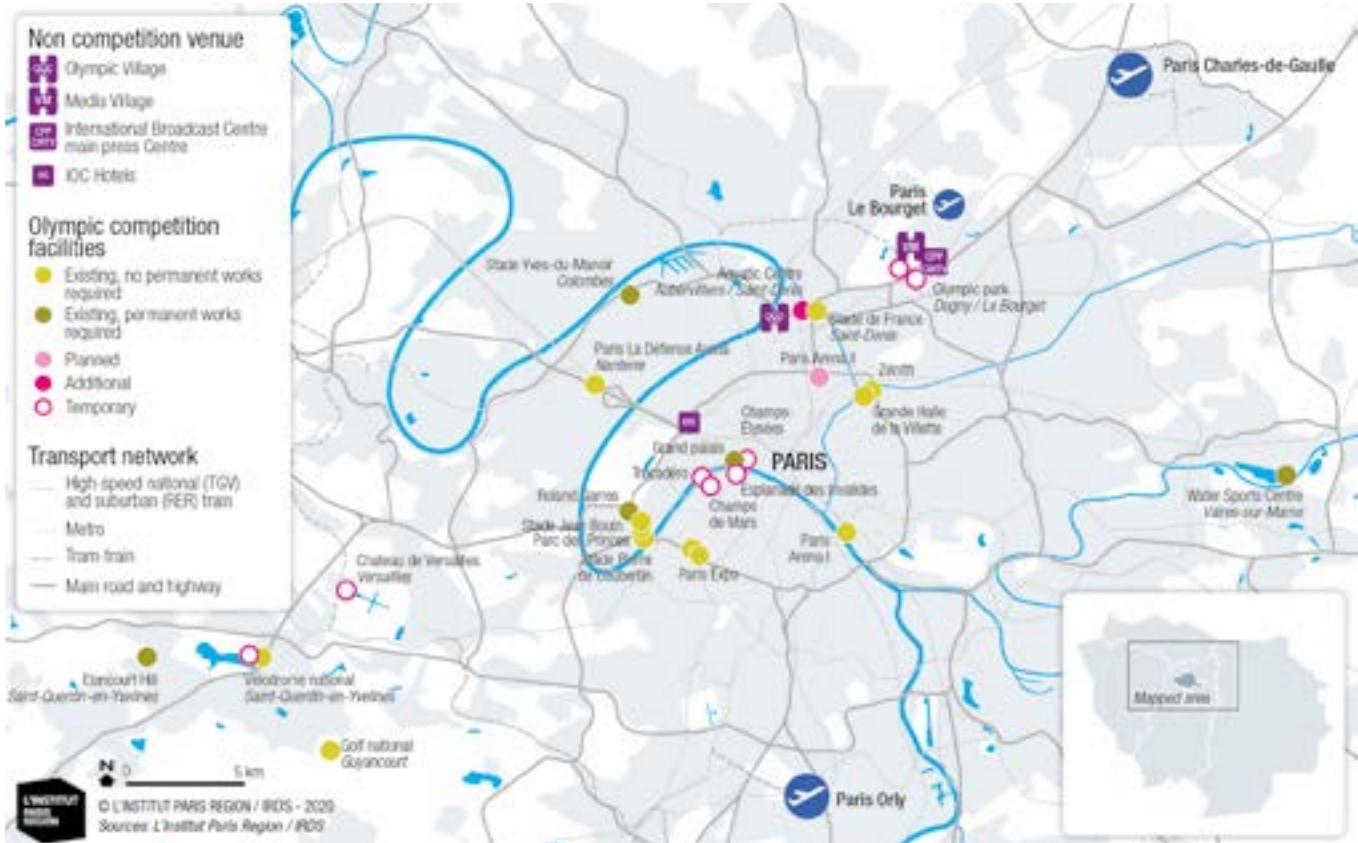
### Provenance of main foreign tourists in Paris Region (2018)

The main international customers in the Paris Region are Americans (4.8%), British (4.0%), Spanish (3.1%), Italians (3.0%) and Germans (3.0%). European customers (including the French) account for 80.6% of tourist stays.



Versailles - The Gardens © Christine Tarquis L'Institut Paris Region

2024 Olympic sites in Paris Region



Sports and leisure activities

(2019)

19,200 sports clubs,  
8,607 sports facilities  
2.4 million sports club members  
12 leisure resorts (3,000 ha)  
5,393 tennis courts,  
419 swimming pools  
620 equestrian centers,  
106 golf courses

Football (soccer):  
267,312 licences  
Tennis: 221,713 licences  
Judo: 109,996 licences  
Golf: 103,415 licences  
Riding: 93,036 licences

INJEP-MERES, Recensement des licences, 2018, RES, Sports Ministry, 2017

Paris 2024 Olympic and Paralympic Games

Olympic Games  
July 26<sup>th</sup>  
– August 11<sup>th</sup>, 2024

Paralympic Games  
August 28<sup>th</sup>  
– Sept. 8<sup>th</sup>, 2024

Some popular sporting events

(2019)

Tour de France (cycling race):  
545,000 spectators  
Paris Open, Roland-Garros  
(Tennis): 480,000 spectators  
NatWest 6 Nations  
championship (rugby):  
150,000 spectators

Paris Marathon: 57,000  
participants, 250,000  
spectators  
GayGames: 105,000  
spectators

Major events

**40**  
major sport events  
in 2018

European Championships in  
Women's Artistic Gymnastics,  
April-May 2020

ECA Canoe Freestyle European  
Championships, October 2020

European Championships  
athletics, August 2020

CRT Paris-Ile-de-France, Estimates IRDS,  
FF Golf, Schneider Electric Marathon, L'Equipe

Venues

95% existing or temporary  
facilities  
1 sports venue to be built  
specifically for the Games:  
the Aquatics Center in  
Saint-Denis  
80% of venues located within  
a 10 km radius of the Village  
22 sports within a 10 km  
radius of the Village  
90,000 hotel rooms within  
10 km of the city center

Sustainable

55% smaller carbon footprints  
than London 2012

Travel

85% of athletes  
accommodated within 30  
minutes of their competition  
venue  
30% of athletes  
accommodated within 5  
minutes of their competition  
venue (Stade de France and  
Aquatics Center)  
100% of training venues  
(excluding competition  
venues) within 20 minutes  
of the Village  
100% of venues accessible  
by environmentally friendly  
public transport  
400 meters maximum  
distance to a metro station  
in Paris

Paris2024 media

### The world capital for shopping

(2018)

Paris is the international capital of fashion and creation. Between luxury houses, department stores, designers trend, concept stores and outlets, the Paris Region is a popular shopping destination for French and foreign tourists.

**223 shopping centers, including Westfield Les Quatre Temps, the Westfield Forum des Halles, Vill'Up, the Carrousel du Louvre, Beaugrenelle, Bercy Village, La Vallée Village.**

**16 major department stores: Galeries Lafayette, Printemps, Le Bon Marché, BHV, Marais...**

**Westfield Les Quatre Temps-Le CNIT**

**#1** French and European shopping destination

**56.5M** visitors in 2018

Sites commerciaux n°291, September 2019, Panorama/tradedimensions, Le guide 2019 de la distribution and L'Institut Paris Region



Westfield Les 4 Temps La Défense business district © C. Tarquis L'Institut Paris Region.

### 3 Paris region shopping centers are among Europe's top 10 centers (annual footfall, in million visitors 2018)

<b>Westfield Les Quatre Temps/Le CNIT (La Défense, Paris Region, France)</b>	<b>56.5</b>
Westfield Stratford City (London, United Kingdom)	51.6
<b>Westfield Forum des Halles (Paris Region, France)</b>	<b>48.8</b>
Bullring (Birmingham, United Kingdom)	39.2
La Part-Dieu (Lyon, France)	31.1
Westfield London (London, United Kingdom)	30.2
Hoog Catherine (Utrecht, Netherlands)	27.0
Manufaktura (Lodz, Poland)	21.2
<b>Créteil Soleil (Créteil, France)</b>	<b>21.0</b>
La Vaguardia (Madrid, Spain)	20.9

Sites commerciaux n° 291, septembre 2019

### A unique culinary desination

(2019)

#### The world's biggest fresh produce market

**Rungis International Market, the world's biggest fresh produce market**  
**9.4 billion euros turnover**  
**18 million consumers**  
**1,200 companies**  
**6,710,450 visitors**  
**3 million tonnes of goods pass through every year with around 300,000 references of fresh food products.**

**5,600 m<sup>2</sup>**

the largest organic market in Europe

Rungis

#### Specialities produced in the Paris Region

**1,000 products and 70 kinds of fruits and vegetables**

Many culinary products are the richness of the region: Bries de Meaux and Melun, coulommiers, Vexin beer, Gâtinais honey and saffron, rose petal confit from Provins, peppermint from Milly-la-Forêt, poultry from Houdan or Grand Marnier.

Cervia

Several varieties of fruits and vegetables take their name from their place of production: Argenteuil asparagus, Arpajon beans, Belle de Fontenay potatoes, mushrooms and hams, Montmorency cherries, Pontoise cabbage, Marcoussis strawberries.

**The Paris Region is the leading French region for the production of parsley, watercress and radishes. It ranks 2<sup>nd</sup> for fava beans, 3<sup>rd</sup> for peas and 4<sup>th</sup> for beets, lettuce or pumpkins.**



Ferrandi School © Aurelia Blanc-CCI Paris Ile-de-France

#### An effervescent gastronomy scene

The Paris Region is home to an effervescent gastronomy scene: **23,000** restaurants, big names in French cuisine, foreign specialties, Parisian cafes, organic cafes,... there is something for every taste!

Guide Michelin

**23,000** restaurants

**135** Michelin-starred restaurants, incl.

**10** 3-stars

**17** 2-stars



Jogging in Le-Vesinet Parc © CASGBS-E. Desaux - Iles Fanac  
 Joinville-le-Pont 6 © ParisEstMarne&Bois - Paris Mur des Je t'aime ©  
 CRT IDF-oshot-Capelle - Tourn - Eco-district of the Docks of Saint-  
 Ouen © A. Fischer L'Institut Paris Region - Saclay © Contexte  
 - Carré Sénart urban center - Multiple architects © Techniflight  
 - La Defense business district from Louis Vuitton Foundation -  
 Architect Frank Gehry © Florence Humbert - SIAE Salon du Bourget  
 2019 © SIAE 2019 - Anthony Guerra & Alex Marc

Please do not hesitate to send us your comments and suggestions to improve this new edition: [prff@chooseparisregion.org](mailto:prff@chooseparisregion.org)

We thank all the organizations and individuals from whom we have been able to retrieve the data used in producing this document: ACI, APUR, Arafer, ARWU, ASTech, AT.Kearney, Barnes, NP Paribas Real Estate, Cap Digital, CBRE, CEOWorld Magazine, Cervia, Choose Paris Region, Colliers International, Paris Ile-de-France CCI, Cosmetic Valley, CRT Paris Ile-de-France, Cushman & Wakefield, Diane, DRIEA, Educsol, Elastopole, Elsevier/Scopus, Eurostat, Expatisan, Ficep, IDI Intelligence, Finance Innovation, Financial Times, FNAK, Fortune Magazine, French Customs, Guide Michelin, Haropa - Ports de Paris, ICCA, Ile-de-France Mobilités, Ile-de-France Region, Immostat, INJEP, INPI, INSEE, IRDS, KPMG, L'Institut Paris Region, Mastercard, Medicon, Mercer, Mov'eo, Ministry of Education, Higher Education and Research, OJS, OLAP, OMIPI, ORIE, OST, OTCP (Paris Convention and Visitors Bureau), Panorama/tradedimensions, Paris2024 media, Paris Aéroport, Paris Ile-de-France Capitale Economique, PWC, QS Quacquarelli Symonds, RATP, Rungis, Savills, Sites commerciaux, SNCF, Société du Grand Paris, Startyp Genome, Systematic, Times Higher Education, Unesco, UNIMEV, Velib Metropole.

Editorial Board:

Choose Paris Region : Pauline Degaudenzi, Florence Humbert  
 L'Institut Paris Region: Vincent Gollain, Christine Tarquis  
 Paris Ile-de-France Regional Chamber of Commerce and Industry: Yves Burfin, Isabelle Savelli  
 Maps: Pascale Guéry, L'Institut Paris Region  
 Graphic design : Kevin Ramanakasina, Choose Paris Region

Printed in March 2020 by Frazier, Paris, France  
 © Choose Paris Region - L'Institut Paris Region - Paris Ile-de-France CCI ISSN: 1958-1270



# Why Paris Region?

A dynamic and fast-growing region, vibrant, innovative and sustainable.

The Paris Region is a truly global region with a population of 12 million. More than 50% of residents are under the age of 40. This young and cosmopolitan steadily growing population is not only benefits from the region's economic opportunities and enjoy an exceptional quality of life. Indeed, economic and demographic indicators point to a bright future for the region's development.



[chooseparisregion.org](https://chooseparisregion.org)



[ChooseParisRegion](https://www.youtube.com/ChooseParisRegion)



[@ChooseParisReg](https://twitter.com/ChooseParisReg)



[ChooseParisRegion](https://www.linkedin.com/company/ChooseParisRegion)



[parisregion](https://wa.me/parisregion)

## Who we are

As the premier business and innovation catalyst supporting international companies with their development in the Paris Region, we're here to guide companies and provide peace of mind as they set up operations in this dynamic ecosystem.

## What we do

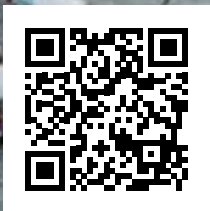
We help companies discover the market and provide a 360° crash course on doing business in France. Our personalized services include setting up your company, opening a bank account, finding your ideal office space, recruiting top talent, relocating your international staff, navigating the administration, and identifying financial partners.



# L'INSTITUT PARIS REGION

URBAN PLANNING AND  
ENVIRONMENTAL AGENCY

URBAN PLANNING  
CULTURE & HERITAGE  
INNOVATION  
METABOLISM  
CLIMATE  
BIODIVERSITY  
MOBILITY  
ECONOMY



<https://en.institutparisregion.fr>

L'INSTITUT  
PARIS  
REGION



# Expanding your network, boosting growth

with Paris Ile-de-France Regional Chamber  
of Commerce and Industry

Are you a foreign company?  
Are you looking for potential business partners  
on the French market?



is at your service  
[doingbusinessinparis.com](http://doingbusinessinparis.com)

crédit photo Fotolia - Création Lonsdale

**0 820 012 112**

Service 0,12 € / min  
+ prix appel

[international.cci-paris-idf.fr](http://international.cci-paris-idf.fr)

 **CCI PARIS ILE-DE-FRANCE**

